

For Research Use Only

CRACR2A Monoclonal antibody, PBS Only



Catalog Number: 66787-1-PBS

Featured Product

Basic Information

Catalog Number:

66787-1-PBS

Size:

1 mg/ml

Source:

Mouse

Isotype:

IgG1

Immunogen Catalog Number:

AG7525

GenBank Accession Number:

BC004524

GeneID (NCBI):

84766

UNIPROT ID:

Q9BSW2

Full Name:

EF-hand calcium binding domain 4B

Calculated MW:

46 kDa

Observed MW:

80-90 kDa

Purification Method:

Protein G purification

CloneNo.:

4C1F5

Applications

Tested Applications:

WB, Indirect ELISA, IF

Species Specificity:

Human

Background Information

CRACR2A (also called CRAC regulator 2A, EFCAB4B) is a cytoplasmic Ca²⁺ sensor predominantly expressed in lymphocytes. It has two isoforms: a long isoform of CRACR2A-a around 80-90 kDa and a short isoform of CRACR2A-c around 46 kDa. CRACR2A-c is involved in the regulation of Ca²⁺-NFAT signaling. CRACR2A-a exists in a GTP- and Golgi membrane-bound form in resting T cells, while it is present in subsynaptic vesicles that translocated from the Golgi region to the immunological synapse after ligation of TCRs. This antibody recognizes both of CRACR2A-c and CRACR2A-a.

Storage

Storage:

Store at -80°C.

Storage Buffer:

PBS Only

For technical support and original validation data for this product please contact:

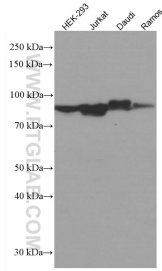
T: 4006900926

E: Proteintech-CN@ptglab.com

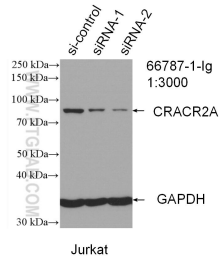
W: ptgcn.com

This product is exclusively available under Proteintech Group brand and is not available to purchase from any other manufacturer.

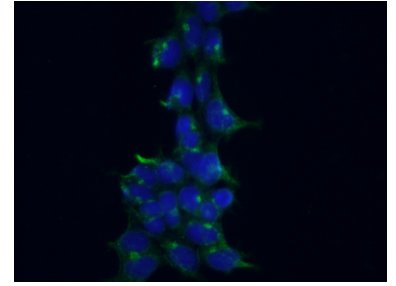
Selected Validation Data



Various lysates were subjected to SDS PAGE followed by western blot with 66787-1-Ig (CRACR2A antibody) at dilution of 1:3000 incubated at room temperature for 1.5 hours. This data was developed using the same antibody clone with 66787-1-PBS in a different storage buffer formulation.



WB result of CRACR2A antibody (66787-1-Ig; 1:3000; incubated at room temperature for 1.5 hours) with sh-Control and sh-CRACR2A transfected Jurkat cells. This data was developed using the same antibody clone with 66787-1-PBS in a different storage buffer formulation.



Immunofluorescent analysis of (-20°C Ethanol) fixed HEK-293 cells using 66787-1-Ig (CRACR2A antibody) at dilution of 1:100 and Alexa Fluor 488-Conjugated AffiniPure Goat Anti-Mouse IgG(H+L). This data was developed using the same antibody clone with 66787-1-PBS in a different storage buffer formulation.