

For Research Use Only

PABPC1, PABP Monoclonal antibody, PBS Only



Catalog Number: 66809-1-PBS

Featured Product

Basic Information

Catalog Number:

66809-1-PBS

Size:

1mg/ml

Source:

Mouse

Isotype:

IgG1

Immunogen Catalog Number:

AG27860

GenBank Accession Number:

BC015958

GeneID (NCBI):

26986

UNIPROT ID:

P11940

Full Name:

poly(A) binding protein, cytoplasmic

1

Calculated MW:

71 kDa

Observed MW:

71 kDa

Purification Method:

Protein A purification

CloneNo.:

3D8B5

Applications

Tested Applications:

WB, IF, IHC, Indirect ELISA

Species Specificity:

Human, rat, mouse

Background Information

The poly(A)-binding protein (PABP), which is found complexed to the 3-prime poly(A) tail of eukaryotic mRNA, is required for poly(A) shortening and translation initiation [PMID: 21989405]. Polyadenylate-binding protein 1 (PABPC1) is a cytoplasmic-nuclear shuttling protein important for protein translation initiation, and both RNA processing and stability. In the cytoplasm, PABPC1 binds to the 3' poly(A) tail of eukaryotic mRNAs through its RNA-recognition motifs (RRM) and interacts with the N-terminus of eIF4G, part of the eIF4F complex associated with the 5' cap structure [PMID:20009508, 17381337].

Storage

Storage:

Store at -80°C.

Storage Buffer:

PBS Only

For technical support and original validation data for this product please contact:

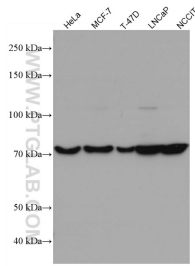
T: 4006900926

E: Proteintech-CN@ptglab.com

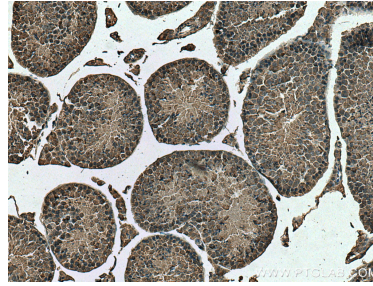
W: ptgcn.com

This product is exclusively available under Proteintech Group brand and is not available to purchase from any other manufacturer.

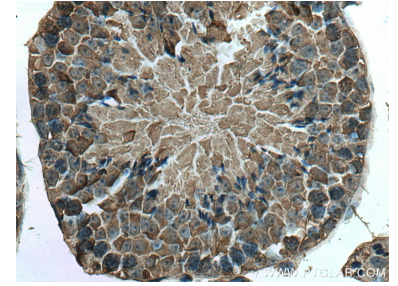
Selected Validation Data



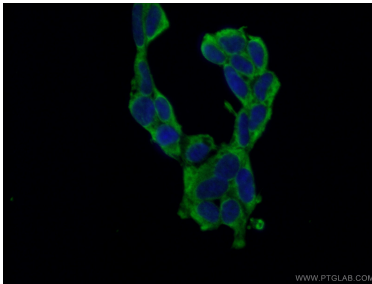
Various lysates were subjected to SDS PAGE followed by western blot with 66809-1-Ig (PABPC1,PABP antibody) at dilution of 1:5000 incubated at room temperature for 1.5 hours. This data was developed using the same antibody clone with 66809-1-PBS in a different storage buffer formulation.



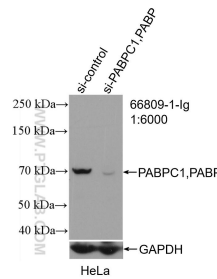
Immunohistochemical analysis of paraffin-embedded mouse testis tissue slide using 66809-1-Ig (PABPC1,PABP antibody) at dilution of 1:200 (under 10x lens). Heat mediated antigen retrieval with Tris-EDTA buffer (pH 9.0). This data was developed using the same antibody clone with 66809-1-PBS in a different storage buffer formulation.



Immunohistochemical analysis of paraffin-embedded mouse testis tissue slide using 66809-1-Ig (PABPC1,PABP antibody) at dilution of 1:200 (under 40x lens). Heat mediated antigen retrieval with Tris-EDTA buffer (pH 9.0). This data was developed using the same antibody clone with 66809-1-PBS in a different storage buffer formulation.



Immunofluorescent analysis of (-20°C Ethanol) fixed HEK-293 cells using 66809-1-Ig (PABPC1,PABP antibody) at dilution of 1:100 and Alexa Fluor 488-Conjugated AffiniPure Goat Anti-Mouse IgG(H+L). This data was developed using the same antibody clone with 66809-1-PBS in a different storage buffer formulation.



WB result of PABPC1,PABP antibody (66809-1-Ig; 1:6000; incubated at room temperature for 1.5 hours) with sh-Control and sh-PABPC1,PABP transfected HeLa cells. This data was developed using the same antibody clone with 66809-1-PBS in a different storage buffer formulation.