

For Research Use Only

MYH14 Monoclonal antibody, PBS Only (Detector)

Catalog Number: 66825-5-PBS



Basic Information

Catalog Number: 66825-5-PBS	GenBank Accession Number: NM_001077186	Purification Method: Protein G Magarose purification
Size: 1 mg/ml	GeneID (NCBI): 79784	CloneNo.: 1C8C3
Source: Mouse	UNIPROT ID: Q7Z406	
Isotype: IgG1	Full Name: myosin, heavy chain 14	
Immunogen Catalog Number: AG28063	Calculated MW: 228 kDa	

Applications

Tested Applications:
Cytometric bead array, Indirect ELISA

Species Specificity:
human

Background Information

Storage

Storage:
Store at -80°C.
The product is shipped with ice packs. Upon receipt, store it immediately at -80°C

Storage Buffer:
PBS Only

For technical support and original validation data for this product please contact:

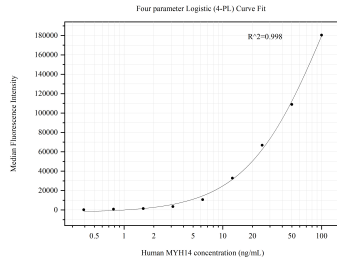
T: 4006900926

E: Proteintech-CN@ptglab.com

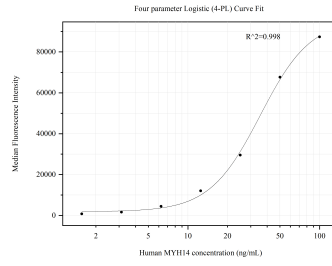
W: ptgcn.com

This product is exclusively available under Proteintech Group brand and is not available to purchase from any other manufacturer.

Selected Validation Data



Cytometric bead array standard curve of MP50505-2, MYH14 Monoclonal Matched Antibody Pair, PBS Only. Capture antibody: 66825-4-PBS. Detection antibody: 66825-5-PBS. Standard: Ag28063. Range: 0.391-100 ng/mL.



Cytometric bead array standard curve of MP50505-3, MYH14 Monoclonal Matched Antibody Pair, PBS Only. Capture antibody: 66825-6-PBS. Detection antibody: 66825-5-PBS. Standard: Ag28063. Range: 1.563-100 ng/mL.