

For Research Use Only

# MBNL1 Monoclonal antibody, PBS Only



Catalog Number: 66837-1-PBS

## Basic Information

<b>Catalog Number:</b> 66837-1-PBS	<b>GenBank Accession Number:</b> BC050535	<b>Purification Method:</b> Protein A purification
<b>Size:</b> 6599 µg/ml	<b>GeneID (NCBI):</b> 4154	<b>CloneNo.:</b> 1H2C12
<b>Source:</b> Mouse	<b>UNIPROT ID:</b> Q9NR56	
<b>Isotype:</b> IgG1	<b>Full Name:</b> muscleblind-like (Drosophila)	
<b>Immunogen Catalog Number:</b> AG7752	<b>Calculated MW:</b> 42 kDa	
	<b>Observed MW:</b> 40 kDa	

## Applications

**Tested Applications:**  
WB, IHC, IF, ELISA

**Species Specificity:**  
Human, mouse, rat, pig

## Background Information

MBNL1 (muscleblind-like 1) is one of the MBNL proteins containing 3 members (MBNL1-3) in vertebrates. And MBNL1 is widely expressed in adult tissues including brain, heart and skeletal muscle (PMID:25274774). As a highly conserved RNA-binding protein, MBNL1 regulates alternative splicing, alternative polyadenylation, mRNA stability and mRNA localization in the nucleus. The neurological diseases DM1 and DM2 (myotonic dystrophy type 1 and type 2) are caused by expansion of repetitive sequences in non-coding regions in the DMPK gene because of the inappropriate patterns of alternative splicing owing to MBNL1 (PMID:24354850). The antibody could recognize the common full-length protein in applications.

## Storage

**Storage:**  
Store at -80°C.  
**The product is shipped with ice packs. Upon receipt, store it immediately at -80°C**

**Storage Buffer:**  
PBS only

For technical support and original validation data for this product please contact:

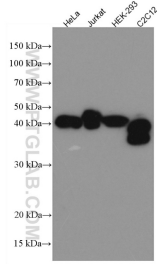
T: 4006900926

E: [Proteintech-CN@ptglab.com](mailto:Proteintech-CN@ptglab.com)

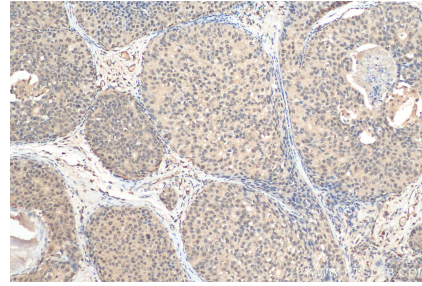
W: [ptgcn.com](http://ptgcn.com)

**This product is exclusively available under Proteintech Group brand and is not available to purchase from any other manufacturer.**

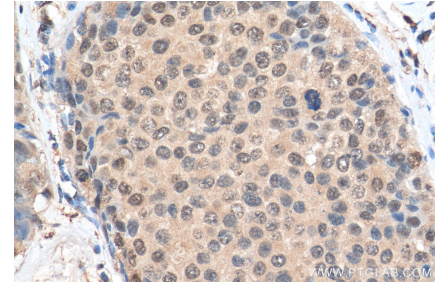
## Selected Validation Data



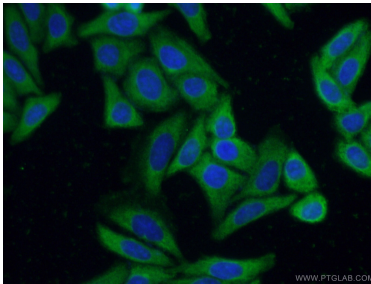
Various lysates were subjected to SDS PAGE followed by western blot with 66837-1-Ig (MBNL1 antibody) at dilution of 1:5000 incubated at room temperature for 1.5 hours. This data was developed using the same antibody clone with 66837-1-PBS in a different storage buffer formulation.



Immunohistochemical analysis of paraffin-embedded human breast cancer tissue slide using 66837-1-Ig (MBNL1 antibody) at dilution of 1:500 (under 10x lens). Heat mediated antigen retrieval with Tris-EDTA buffer (pH 9.0). This data was developed using the same antibody clone with 66837-1-PBS in a different storage buffer formulation.



Immunohistochemical analysis of paraffin-embedded human breast cancer tissue slide using 66837-1-Ig (MBNL1 antibody) at dilution of 1:500 (under 40x lens). Heat mediated antigen retrieval with Tris-EDTA buffer (pH 9.0). This data was developed using the same antibody clone with 66837-1-PBS in a different storage buffer formulation.



Immunofluorescent analysis of (-20°C Ethanol) fixed HepG2 cells using 66837-1-Ig (MBNL1 antibody) at dilution of 1:50 and Alexa Fluor 488-Conjugated AffiniPure Goat Anti-Mouse IgG(H+L). This data was developed using the same antibody clone with 66837-1-PBS in a different storage buffer formulation.