

For Research Use Only

G6PC Monoclonal antibody, PBS Only (Detector)

Catalog Number: 66860-1-PBS



Basic Information

Catalog Number:

66860-1-PBS

Size:

6040 ug/ml

Source:

Mouse

Isotype:

IgG1

Immunogen Catalog Number:

AG17839

GenBank Accession Number:

BC130478

GeneID (NCBI):

2538

UNIPROT ID:

P35575

Full Name:

glucose-6-phosphatase, catalytic subunit

Calculated MW:

357 aa, 40 kDa

Observed MW:

37-42 kDa

Purification Method:

Protein A purification

CloneNo.:

1E11A5

Applications

Tested Applications:

WB, IHC, Cytometric bead array, Indirect ELISA

Species Specificity:

human

Background Information

Glucose-6-phosphatase- α (G6PC) is a key enzyme in glucose homeostasis that catalyzes the hydrolysis of glucose-6-phosphate to glucose and phosphate in the terminal step of gluconeogenesis and glycogenolysis. G6PC activity is restricted to the liver, the kidney cortex and the small intestine and confers on these three organs the capacity to release glucose into the systemic circulation (PMID: 21983240). The encoded enzyme is anchored to the ER by nine transmembrane helices with the amino (N)-terminus in the lumen and the carboxyl (C)-terminus in the cytoplasm (PMID: 15542400).

Storage

Storage:

Store at -80°C .

The product is shipped with ice packs. Upon receipt, store it immediately at -80°C

Storage Buffer:

PBS Only

For technical support and original validation data for this product please contact:

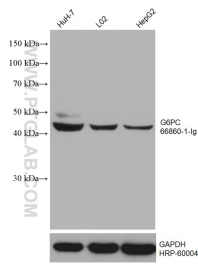
T: 4006900926

E: Proteintech-CN@ptglab.com

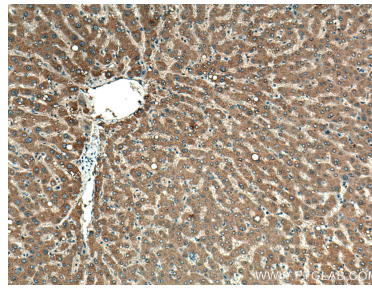
W: ptgcn.com

This product is exclusively available under Proteintech Group brand and is not available to purchase from any other manufacturer.

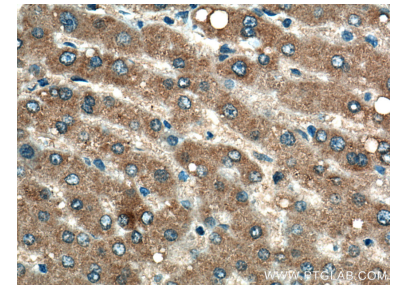
Selected Validation Data



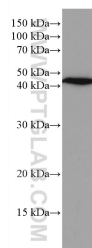
Various lysates were subjected to SDS PAGE followed by western blot with 66860-1-Ig (G6PC antibody) at dilution of 1:5000 incubated at room temperature for 1.5 hours. The membrane was stripped and reblotted with HRP-conjugated GAPDH Monoclonal antibody (HRP-60004) as loading control. This data was developed using the same antibody clone with 66860-1-PBS in a different storage buffer formulation.



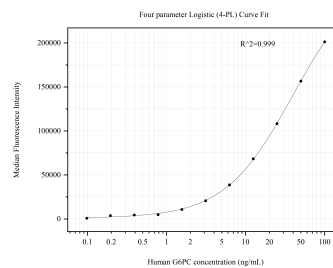
Immunohistochemical analysis of paraffin-embedded human liver tissue slide using 66860-1-Ig (G6PC antibody) at dilution of 1:200 (under 10x lens). Heat mediated antigen retrieval with Tris-EDTA buffer (pH 9.0). This data was developed using the same antibody clone with 66860-1-PBS in a different storage buffer formulation.



Immunohistochemical analysis of paraffin-embedded human liver tissue slide using 66860-1-Ig (G6PC antibody) at dilution of 1:200 (under 40x lens). Heat mediated antigen retrieval with Tris-EDTA buffer (pH 9.0). This data was developed using the same antibody clone with 66860-1-PBS in a different storage buffer formulation.



HuH-7 cells were subjected to SDS PAGE followed by western blot with 66860-1-Ig (G6PC antibody) at dilution of 1:2000 incubated at room temperature for 1.5 hours. This data was developed using the same antibody clone with 66860-1-PBS in a different storage buffer formulation.



Cytometric bead array standard curve of MP50826-2, G6PC Monoclonal Matched Antibody Pair, PBS Only. Capture antibody: 66860-4-PBS. Detection antibody: 66860-1-PBS. Standard: Ag17839. Range: 0.098-100 ng/mL.