

For Research Use Only

# PCK1 Monoclonal antibody, PBS Only



Catalog Number: 66862-1-PBS

## Basic Information

Catalog Number:

66862-1-PBS

Size:

5141  $\mu$ g/ml

Source:

Mouse

Isotype:

IgG1

Immunogen Catalog Number:

AG9720

GenBank Accession Number:

BC023978

GeneID (NCBI):

5105

UNIPROT ID:

P35558

Full Name:

phosphoenolpyruvate carboxykinase

1 (soluble)

Calculated MW:

622 aa, 69 kDa

Observed MW:

65-69 kDa

Purification Method:

Protein G purification

CloneNo.:

2F11B5

## Applications

Tested Applications:

WB, IHC, IF, ELISA

Species Specificity:

Human, Mouse, Rat, Pig

## Background Information

PCK1 (Phosphoenolpyruvate carboxykinase, cytosolic) is also named as PEPCK1 and belongs to the phosphoenolpyruvate carboxykinase [GTP] family. It catalyzes the formation of phosphoenolpyruvate from oxaloacetate, with the release of carbon dioxide and GDP. It is also a main control point for the regulation of gluconeogenesis. In eukaryotes there are two isozymes: a cytoplasmic one and a mitochondrial one. Defects in PCK1 are the cause of cytosolic phosphoenolpyruvate carboxykinase deficiency (C-PEPCKD).

## Storage

Storage:

Store at  $-20^{\circ}\text{C}$ . Stable for one year after shipment.

Storage Buffer:

PBS only

Aliquoting is unnecessary for  $-20^{\circ}\text{C}$  storage

For technical support and original validation data for this product please contact:

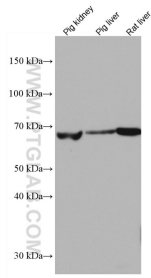
T: 4006900926

E: [Proteintech-CN@ptglab.com](mailto:Proteintech-CN@ptglab.com)

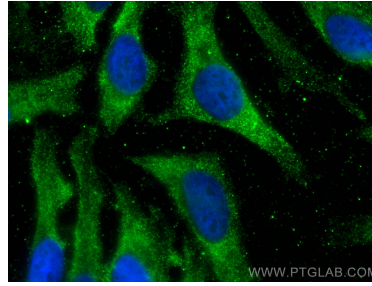
W: [ptgcn.com](http://ptgcn.com)

This product is exclusively available under Proteintech Group brand and is not available to purchase from any other manufacturer.

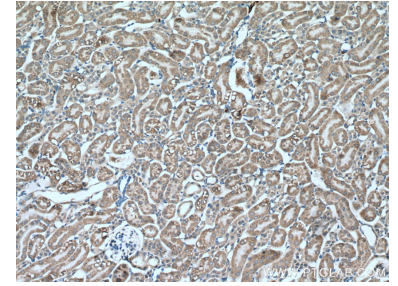
## Selected Validation Data



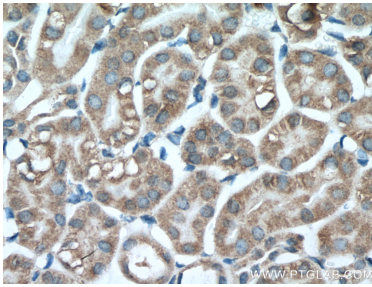
Various lysates were subjected to SDS PAGE followed by western blot with 66862-1-Ig (PCK1 antibody) at dilution of 1:2000 incubated at room temperature for 1.5 hours. This data was developed using the same antibody clone with 66862-1-PBS in a different storage buffer formulation.



Immunofluorescent analysis of (-20°C Ethanol) fixed HeLa cells using PCK1 antibody (66862-1-Ig, Clone: 2F11B5) at dilution of 1:800 and CoraLite®488-Conjugated AffiniPure Goat Anti-Mouse IgG(H+L). This data was developed using the same antibody clone with 66862-1-PBS in a different storage buffer formulation.



Immunohistochemical analysis of paraffin-embedded mouse kidney tissue slide using 66862-1-Ig (PCK1 antibody) at dilution of 1:400 (under 10x lens). Heat mediated antigen retrieval with Tris-EDTA buffer (pH 9.0). This data was developed using the same antibody clone with 66862-1-PBS in a different storage buffer formulation.



Immunohistochemical analysis of paraffin-embedded mouse kidney tissue slide using 66862-1-Ig (PCK1 antibody) at dilution of 1:400 (under 40x lens). Heat mediated antigen retrieval with Tris-EDTA buffer (pH 9.0). This data was developed using the same antibody clone with 66862-1-PBS in a different storage buffer formulation.