

For Research Use Only

KPNA2 Monoclonal antibody

Catalog Number: 66870-1-Ig



Basic Information

Catalog Number: 66870-1-Ig	GenBank Accession Number: BC005978	Purification Method: Protein G purification
Size: 1700 µg/ml	GeneID (NCBI): 3838	CloneNo.: 2G9C1
Source: Mouse	UNIPROT ID: P52292	Recommended Dilutions: WB 1:1000-1:5000 IF 1:400-1:1600
Isotype: IgG1	Full Name: karyopherin alpha 2 (RAG cohort 1, importin alpha 1)	
Immunogen Catalog Number: AG28386	Calculated MW: 57.8 kDa	
	Observed MW: 55-58 kDa	

Applications

Tested Applications: IF/ICC, WB, ELISA	Positive Controls:
Species Specificity: Human	WB : HeLa cells, HEK-293 cells, MCF-7 cells, Jurkat cells, Raji cells IF : MCF-7 cells,

Background Information

KPNA2 (karyopherin α 2) is a nuclear import factor involved in the nucleocytoplasmic transport system. It is functionally involved in the tumor progression and is elevated in multiple cancers. KPNA2 expression may be a useful prognostic biomarker to monitor cancer prognosis.

Storage

Storage:
Store at -20°C. Stable for one year after shipment.
Storage Buffer:
PBS with 0.02% sodium azide and 50% glycerol pH 7.3.
Aliquoting is unnecessary for -20°C storage

For technical support and original validation data for this product please contact:

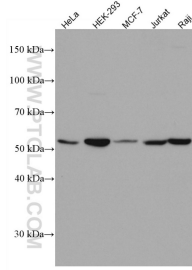
T: 4006900926

E: Proteintech-CN@ptglab.com

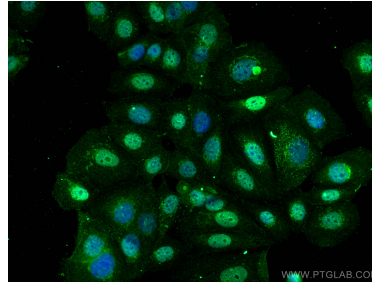
W: ptgcn.com

This product is exclusively available under Proteintech Group brand and is not available to purchase from any other manufacturer.

Selected Validation Data



Various lysates were subjected to SDS PAGE followed by western blot with 66870-1-Ig (KPNA2 antibody) at dilution of 1:3000 incubated at room temperature for 1.5 hours.



Immunofluorescent analysis of (4% PFA) fixed MCF-7 cells using KPNA2 antibody (66870-1-Ig, Clone: 2G9C1) at dilution of 1:800 and CoraLite®488-Conjugated AffiniPure Goat Anti-Mouse IgG(H+L).