

For Research Use Only

# Jagged1 Monoclonal antibody, PBS Only



Catalog Number: 66890-1-PBS

Featured Product

## Basic Information

<b>Catalog Number:</b> 66890-1-PBS	<b>GenBank Accession Number:</b> BC098393	<b>Purification Method:</b> Protein A purification
<b>Size:</b> 1 mg/ml	<b>GeneID (NCBI):</b> 182	<b>CloneNo.:</b> 2A7D11
<b>Source:</b> Mouse	<b>UNIPROT ID:</b> P78504	
<b>Isotype:</b> IgA	<b>Full Name:</b> jagged 1 (Alagille syndrome)	
<b>Immunogen Catalog Number:</b> AG11891	<b>Calculated MW:</b> 1218 aa, 134 kDa	
	<b>Observed MW:</b> 150 kDa	

## Applications

**Tested Applications:**  
WB, ELISA

**Species Specificity:**  
Human

## Background Information

Jagged1 is a type I, membrane-anchored, multidomain protein and a ligand of the Notch receptor. The receptor-ligand interaction can trigger the Notch signaling and activate transcription factors that play key roles in cell differentiation and morphogenesis. The predicted MW of Jagged1 is 134 kDa, while higher MW around 150-180 kDa had been observed in literatures (PMID: 9716576, 9596653).

## Storage

**Storage:**  
Store at -80°C.  
**The product is shipped with ice packs. Upon receipt, store it immediately at -80°C**

**Storage Buffer:**  
PBS only

For technical support and original validation data for this product please contact:

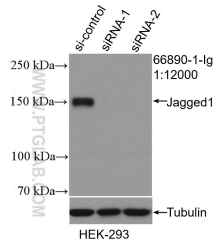
T: 4006900926

E: [Proteintech-CN@ptglab.com](mailto:Proteintech-CN@ptglab.com)

W: [ptgcn.com](http://ptgcn.com)

**This product is exclusively available under Proteintech Group brand and is not available to purchase from any other manufacturer.**

## Selected Validation Data



WB result of Jagged1 antibody (66890-1-Ig; 1:12000; incubated at room temperature for 1.5 hours) with sh-Control and sh-Jagged1 transfected HEK-293 cells. This data was developed using the same antibody clone with 66890-1-PBS in a different storage buffer formulation.