

For Research Use Only

# DLC1 Monoclonal antibody

Catalog Number: 66894-1-Ig **1 Publications**



## Basic Information

<b>Catalog Number:</b> 66894-1-Ig	<b>GenBank Accession Number:</b> BC054511	<b>Purification Method:</b> Protein G purification
<b>Size:</b> 2100 µg/ml	<b>GeneID (NCBI):</b> 10395	<b>CloneNo.:</b> 1G10H12
<b>Source:</b> Mouse	<b>UNIPROT ID:</b> Q96QB1	<b>Recommended Dilutions:</b> WB 1:2000-1:10000 IF/ICC 1:400-1:1600
<b>Isotype:</b> IgG1	<b>Full Name:</b> deleted in liver cancer 1	
<b>Immunogen Catalog Number:</b> AG24404	<b>Calculated MW:</b> 171 kDa	
	<b>Observed MW:</b> 115 kDa	

## Applications

<b>Tested Applications:</b> IF/ICC, WB, ELISA	<b>Positive Controls:</b> WB : NCI-H1299 cells, HepG2 cells, A549 cells
<b>Cited Applications:</b> WB	<b>IF/ICC :</b> A375 cells, HepG2 cells
<b>Species Specificity:</b> Human	
<b>Cited Species:</b> human	

## Background Information

Deleted in Liver Cancer 1 (DLC1) is a RhoGAP-containing tumor suppressor that inhibits angiogenesis by repressing VEGF production in epithelial cells. DLC1 is often down-regulated in a variety of cancers, such as those of the liver, lung, breast, stomach, brain, colon and prostate due to either genomic deletion or aberrant DNA methylation.

## Notable Publications

Author	Pubmed ID	Journal	Application
Wen-Di Zhang	37790851	Int J Med Sci	WB

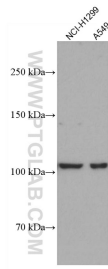
## Storage

**Storage:**  
Store at -20°C. Stable for one year after shipment.  
**Storage Buffer:**  
PBS with 0.02% sodium azide and 50% glycerol pH 7.3.  
**Aliquoting is unnecessary for -20°C storage**

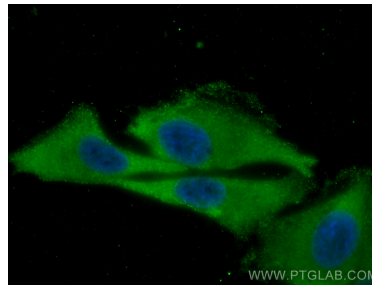
For technical support and original validation data for this product please contact:  
T: 4006900926 E: Proteintech-CN@ptglab.com W: ptgcn.com

**This product is exclusively available under Proteintech Group brand and is not available to purchase from any other manufacturer.**

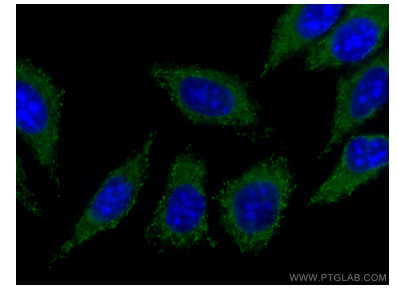
## Selected Validation Data



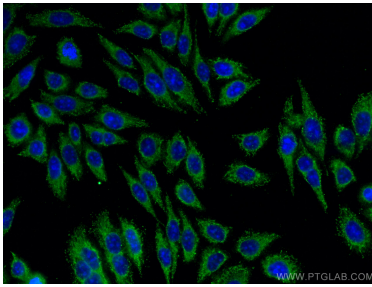
Various lysates were subjected to SDS PAGE followed by western blot with 66894-1-Ig (DLC1 antibody) at dilution of 1:5000 incubated at room temperature for 1.5 hours.



Immunofluorescent analysis of (-20°C Methanol) fixed A375 cells using DLC1 antibody (66894-1-Ig, Clone: 1G10H12) at dilution of 1:800 and CoraLite®488-Conjugated AffiniPure Goat Anti-Mouse IgG(H+L).



Immunofluorescent analysis of (-20°C Methanol) fixed HepG2 cells using DLC1 antibody (66894-1-Ig, Clone: 1G10H12) at dilution of 1:400 and CoraLite®488-Conjugated AffiniPure Goat Anti-Mouse IgG(H+L).



Immunofluorescent analysis of (-20°C Methanol) fixed HepG2 cells using DLC1 antibody (66894-1-Ig, Clone: 1G10H12) at dilution of 1:400 and CoraLite®488-Conjugated AffiniPure Goat Anti-Mouse IgG(H+L).