

For Research Use Only

DLC1 Monoclonal antibody, PBS Only



Catalog Number: 66894-1-PBS

Basic Information

Catalog Number: 66894-1-PBS	GenBank Accession Number: BC054511	Purification Method: Protein G purification
Size: 1 mg/ml	GeneID (NCBI): 10395	CloneNo.: 1G10H12
Source: Mouse	UNIPROT ID: Q96QB1	
Isotype: IgG1	Full Name: deleted in liver cancer 1	
Immunogen Catalog Number: AG24404	Calculated MW: 171 kDa	
	Observed MW: 115 kDa	

Applications

Tested Applications:
WB, Indirect ELISA, IF

Species Specificity:
Human

Background Information

Deleted in Liver Cancer 1 (DLC1) is a RhoGAP-containing tumor suppressor that inhibits angiogenesis by repressing VEGF production in epithelial cells. DLC1 is often down-regulated in a variety of cancers, such as those of the liver, lung, breast, stomach, brain, colon and prostate due to either genomic deletion or aberrant DNA methylation.

Storage

Storage:
Store at -80°C.
The product is shipped with ice packs. Upon receipt, store it immediately at -80°C

Storage Buffer:
PBS Only

For technical support and original validation data for this product please contact:

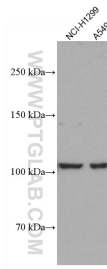
T: 4006900926

E: Proteintech-CN@ptglab.com

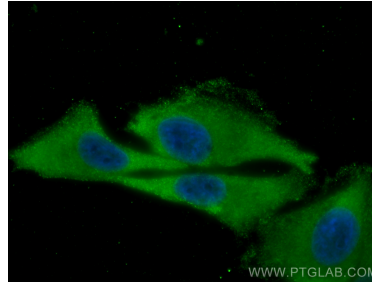
W: ptgcn.com

This product is exclusively available under Proteintech Group brand and is not available to purchase from any other manufacturer.

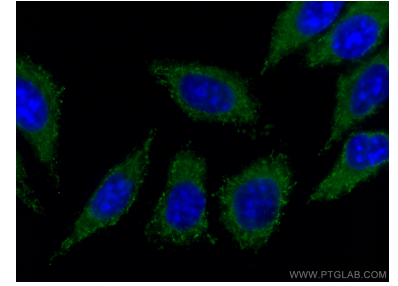
Selected Validation Data



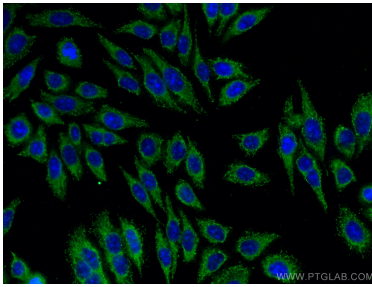
Various lysates were subjected to SDS PAGE followed by western blot with 66894-1-Ig (DLC1 antibody) at dilution of 1:5000 incubated at room temperature for 1.5 hours. This data was developed using the same antibody clone with 66894-1-PBS in a different storage buffer formulation.



Immunofluorescent analysis of (-20°C Methanol) fixed A375 cells using DLC1 antibody (66894-1-Ig, Clone: 1G10H12) at dilution of 1:800 and CoraLite®488-Conjugated AffiniPure Goat Anti-Mouse IgG(H+L). This data was developed using the same antibody clone with 66894-1-PBS in a different storage buffer formulation.



Immunofluorescent analysis of (-20°C Methanol) fixed HepG2 cells using DLC1 antibody (66894-1-Ig, Clone: 1G10H12) at dilution of 1:400 and CoraLite®488-Conjugated AffiniPure Goat Anti-Mouse IgG(H+L). This data was developed using the same antibody clone with 66894-1-PBS in a different storage buffer formulation.



Immunofluorescent analysis of (-20°C Methanol) fixed HepG2 cells using DLC1 antibody (66894-1-Ig, Clone: 1G10H12) at dilution of 1:400 and CoraLite®488-Conjugated AffiniPure Goat Anti-Mouse IgG(H+L). This data was developed using the same antibody clone with 66894-1-PBS in a different storage buffer formulation.