

For Research Use Only

NFATC3 Monoclonal antibody, PBS Only (Detector)



Catalog Number: 66924-1-PBS

Basic Information

Catalog Number: 66924-1-PBS	GenBank Accession Number: BC001050	Purification Method: Protein A purification
Size: 1mg/ml	GeneID (NCBI): 4775	CloneNo.: 1C1H8
Source: Mouse	UNIPROT ID: Q12968	Affinity: $K_D = 1.16 \times 10^{-10}$
Isotype: IgG1	Full Name: nuclear factor of activated T-cells, cytoplasmic, calcineurin-dependent 3	$K_{Off} = 5.67 \times 10^{-6}$ $K_{On} = 4.90 \times 10^4$
Immunogen Catalog Number: AG27306	Calculated MW: 116 kDa	
	Observed MW: 160 kDa	

Applications

Tested Applications:
WB, Sandwich ELISA, Indirect ELISA

Species Specificity:
Human

Background Information

NFAT (nuclear factors of activated T cells) proteins are a family of transcription factors originally identified as mediators of activation of cytokine genes in response to antigenic stimulation of T cells. NFAT proteins also play varied roles in cells outside of the immune system [PMID:11877454]. NFATc3 has specifically been implicated in vasculature development, regulation of smooth muscle contractile phenotype, and modulation of vascular smooth muscle contractility [PMID:11439183,17148444]. The calculated molecular weight of NFATC3 is 115 kDa, but the post-modified protein is about 130-170 kDa (PMID: 15728531, PMID: 15857835)

Storage

Storage:
Store at -80°C.

Storage Buffer:
100% PBS pH 7.3

For technical support and original validation data for this product please contact:

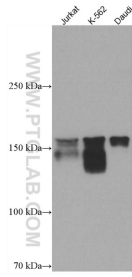
T: 4006900926

E: Proteintech-CN@ptglab.com

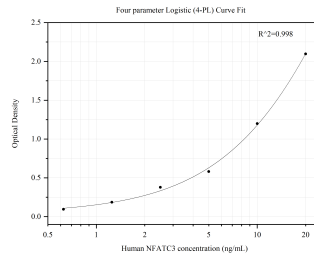
W: ptgcn.com

This product is exclusively available under Proteintech Group brand and is not available to purchase from any other manufacturer.

Selected Validation Data



Various lysates were subjected to SDS PAGE followed by western blot with 66924-1-Ig (NFATC3 antibody) at dilution of 1:3000 incubated at room temperature for 1.5 hours. This data was developed using the same antibody clone with 66924-1-PBS in a different storage buffer formulation.



Sandwich ELISA standard curve of MP50022-1, NFATC3 Monoclonal Matched Antibody Pair, PBS Only. Capture antibody: 66924-2-PBS. Detection antibody: HRP-conjugated 66924-1-PBS. Standard: Ag27306. Range: 0.625-20 ng/mL.