

For Research Use Only

# CFTR Monoclonal antibody, PBS Only

Catalog Number: 66928-1-PBS



## Basic Information

Catalog Number:

66928-1-PBS

Size:

1mg/ml

Source:

Mouse

Isotype:

IgG1

Immunogen Catalog Number:

AG27810

GenBank Accession Number:

NM\_000492

GeneID (NCBI):

1080

UNIPROT ID:

P13569

Full Name:

cystic fibrosis transmembrane  
conductance regulator (ATP-binding  
cassette sub-family C, member 7)

Calculated MW:

168 kDa

Observed MW:

150 kDa

Purification Method:

Protein G purification

CloneNo.:

2F4A8

## Applications

Tested Applications:

WB, IHC, ELISA

Species Specificity:

human, mouse, rat, rabbit

## Background Information

CFTR is a member of the ATP-binding cassette (ABC) family of membrane transport proteins, functioning as a chloride channel responsible for ion flow across epithelial surfaces of lung, sinuses, pancreas, intestine, and liver. Mutations of CFTR cause cystic fibrosis (CF), a disorder affecting the respiratory, digestive, reproductive systems and sweat glands.

## Storage

Storage:

Store at -80°C.

The product is shipped with ice packs. Upon receipt, store it immediately at -80°C

Storage Buffer:

PBS Only

For technical support and original validation data for this product please contact:

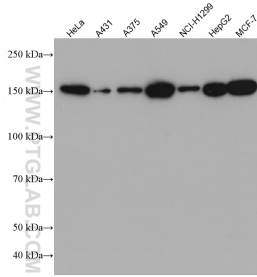
T: 4006900926

E: [Proteintech-CN@ptglab.com](mailto:Proteintech-CN@ptglab.com)

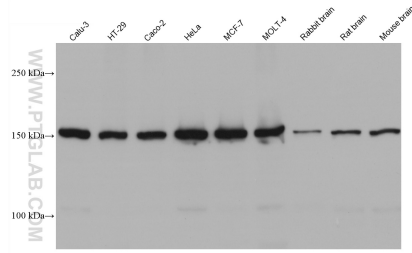
W: [ptgcn.com](http://ptgcn.com)

This product is exclusively available under Proteintech Group brand and is not available to purchase from any other manufacturer.

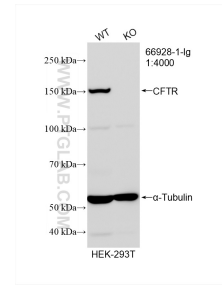
## Selected Validation Data



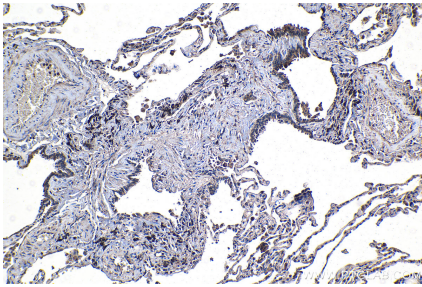
Various lysates were subjected to SDS PAGE followed by western blot with 66928-1-Ig (CFTR antibody) at dilution of 1:2000 incubated at room temperature for 1.5 hours. This data was developed using the same antibody clone with 66928-1-PBS in a different storage buffer formulation.



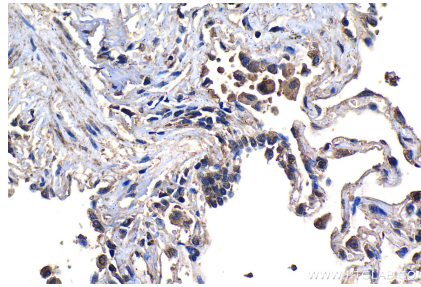
Various lysates were subjected to SDS PAGE followed by western blot with 66928-1-Ig (CFTR antibody) at dilution of 1:10000 incubated at room temperature for 1.5 hours. This data was developed using the same antibody clone with 66928-1-PBS in a different storage buffer formulation.



WB result of CFTR antibody (66928-1-Ig; 1:4000; room temperature for 1.5 hours) with wild-type and CFTR knockout HEK-293T cells. This data was developed using the same antibody clone with 66928-1-PBS in a different storage buffer formulation.



Immunohistochemical analysis of paraffin-embedded human lung tissue slide using 66928-1-Ig (CFTR antibody) at dilution of 1:500 (under 10x lens). Heat mediated antigen retrieval with Tris-EDTA buffer (pH 9.0). This data was developed using the same antibody clone with 66928-1-PBS in a different storage buffer formulation.



Immunohistochemical analysis of paraffin-embedded human lung tissue slide using 66928-1-Ig (CFTR antibody) at dilution of 1:500 (under 40x lens). Heat mediated antigen retrieval with Tris-EDTA buffer (pH 9.0). This data was developed using the same antibody clone with 66928-1-PBS in a different storage buffer formulation.