

For Research Use Only

# NOTUM Monoclonal antibody, PBS Only (Detector)

Catalog Number: 66956-1-PBS



## Basic Information

|  |   |   |
|--|---|---|
| <b>Catalog Number:</b><br>66956-1-PBS      | <b>GenBank Accession Number:</b><br>BC060882                          | <b>Purification Method:</b><br>Protein A purification |
| <b>Size:</b><br>1mg/ml                     | <b>GeneID (NCBI):</b><br>147111                                       | <b>CloneNo.:</b><br>2F6D5                             |
| <b>Source:</b><br>Mouse                    | <b>UNIPROT ID:</b><br>Q6P988  |   |
| <b>Isotype:</b><br>IgG1                    | <b>Full Name:</b><br>notum pectinacylesterase homolog<br>(Drosophila) |   |
| <b>Immunogen Catalog Number:</b><br>AG6338 | <b>Calculated MW:</b><br>56 kDa                                       |   |
|  | <b>Observed MW:</b><br>56 kDa   |   |

## Applications

**Tested Applications:**  
WB, IHC, Cytometric bead array, Indirect ELISA

**Species Specificity:**  
human

## Background Information

### Storage

**Storage:**  
Store at -80°C.  
**The product is shipped with ice packs. Upon receipt, store it immediately at -80°C**

**Storage Buffer:**  
PBS Only

For technical support and original validation data for this product please contact:

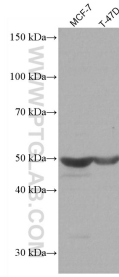
T: 4006900926

E: [Proteintech-CN@ptglab.com](mailto:Proteintech-CN@ptglab.com)

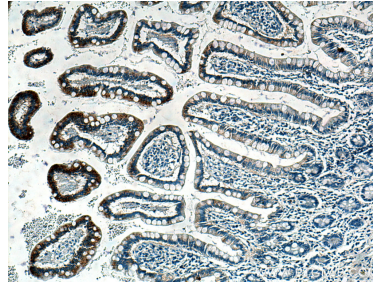
W: [ptgcn.com](http://ptgcn.com)

**This product is exclusively available under Proteintech Group brand and is not available to purchase from any other manufacturer.**

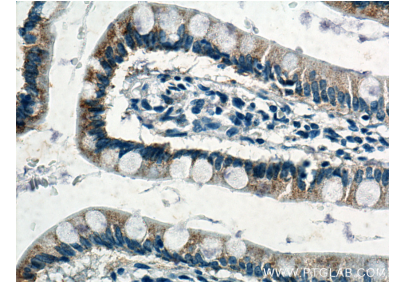
## Selected Validation Data



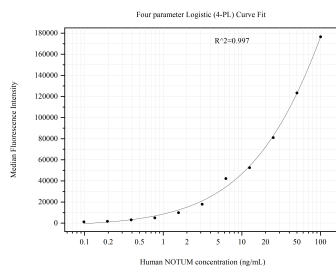
Various lysates were subjected to SDS PAGE followed by western blot with 66956-1-Ig (NOTUM antibody) at dilution of 1:50000 incubated at room temperature for 1.5 hours. This data was developed using the same antibody clone with 66956-1-PBS in a different storage buffer formulation.



Immunohistochemical analysis of paraffin-embedded human small intestine tissue slide using 66956-1-Ig (NOTUM antibody) at dilution of 1:5000 (under 10x lens).. This data was developed using the same antibody clone with 66956-1-PBS in a different storage buffer formulation.



Immunohistochemical analysis of paraffin-embedded human small intestine tissue slide using 66956-1-Ig (NOTUM antibody) at dilution of 1:5000 (under 40x lens).. This data was developed using the same antibody clone with 66956-1-PBS in a different storage buffer formulation.



Cytometric bead array standard curve of MP50968-3, NOTUM Monoclonal Matched Antibody Pair, PBS Only. Capture antibody: 66956-2-PBS. Detection antibody: 66956-1-PBS. Standard: Ag6338. Range: 0.098-100 ng/mL.