

# LXN Monoclonal antibody

Catalog Number: 66957-1-Ig

## Basic Information

**Catalog Number:**

66957-1-Ig

**Size:**

1800 µg/ml

**Source:**

Mouse

**Isotype:**

IgG1

**Immunogen Catalog Number:**

AG27922

**GenBank Accession Number:**

BC005346

**GeneID (NCBI):**

56925

**UNIPROT ID:**

Q9BS40

**Full Name:**

latexin

**Calculated MW:**

222 aa, 26 kDa

**Observed MW:**

30 kDa

**Purification Method:**

Protein G purification

**CloneNo.:**

3E5A5

**Recommended Dilutions:**

WB 1:2000-1:10000

IHC 1:250-1:1000

IF/ICC 1:400-1:1600

## Applications

**Tested Applications:**

WB, IHC, ELISA, IF/ICC, FC (Inrta)

**Species Specificity:**

Human, Pig, rabbit

**Note-IHC: suggested antigen retrieval with TE buffer pH 9.0; (\*) Alternatively, antigen retrieval may be performed with citrate buffer pH 6.0**

**Positive Controls:**

**WB :** pig brain tissue, A549 cells, HEK-293 cells, SH-SY5Y cells, rabbit brain tissue, HeLa cells

**IHC :** human heart tissue,

**IF/ICC :** HeLa cells,

## Background Information

Latexin, also named as LTXN, LXN, ECI, MUM and TCI, is hardly reversible, non-competitive, and potent inhibitor of CPA1, CPA2 and CPA4. It may function as a neuroprotective mechanism against tau toxicity.

## Storage

**Storage:**

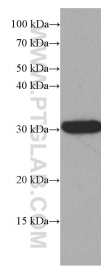
Store at -20°C. Stable for one year after shipment.

**Storage Buffer:**

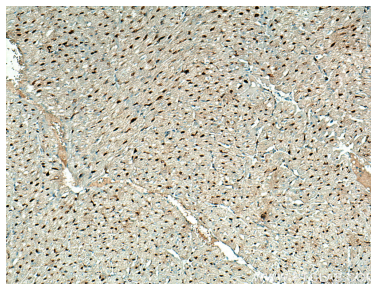
PBS with 0.02% sodium azide and 50% glycerol pH 7.3.

Aliquoting is unnecessary for -20°C storage

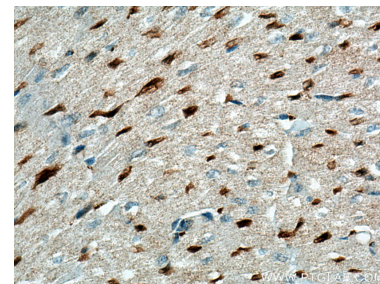
## Selected Validation Data



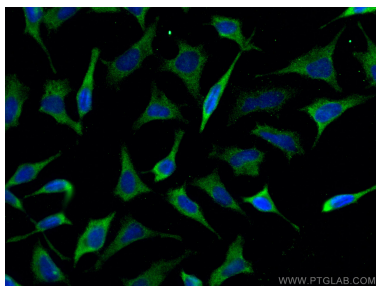
pig brain tissue were subjected to SDS PAGE followed by western blot with 66957-1-Ig (LXN antibody) at dilution of 1:5000 incubated at room temperature for 1.5 hours.



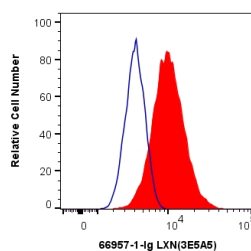
Immunohistochemical analysis of paraffin-embedded human heart tissue slide using 66957-1-Ig (LXN antibody) at dilution of 1:500 (under 10x lens). Heat mediated antigen retrieval with Tris-EDTA buffer (pH 9.0).



Immunohistochemical analysis of paraffin-embedded human heart tissue slide using 66957-1-Ig (LXN antibody) at dilution of 1:500 (under 40x lens). Heat mediated antigen retrieval with Tris-EDTA buffer (pH 9.0).



Immunofluorescent analysis of (-20°C Methanol) fixed HeLa cells using LXN antibody (66957-1-Ig, Clone: 3E5A5 ) at dilution of 1:800 and CoraLite®488-Conjugated AffiniPure Goat Anti-Mouse IgG(H+L).



1X10<sup>6</sup> HeLa cells were intracellularly stained with 0.4 ug Anti-Human LXN (66957-1-Ig, Clone:3E5A5) and CoraLite®488-Conjugated AffiniPure Goat Anti-Mouse IgG(H+L) at dilution 1:1000 (red), or 0.4 ug Mouse IgG1 Isotype Control (MOPC-21) (65124-1-Ig, Clone: MOPC-21) (blue). Cells were fixed with 4% PFA and permeabilized with Flow Cytometry Perm Buffer (PF00011-C).