

For Research Use Only

PAPPA Monoclonal antibody, PBS Only



Catalog Number: 66962-1-PBS

Featured Product

Basic Information

Catalog Number:

66962-1-PBS

Size:

1 mg/ml

Source:

Mouse

Isotype:

IgG1

Immunogen Catalog Number:

AG11863

GenBank Accession Number:

BC078657

GeneID (NCBI):

5069

UNIPROT ID:

Q13219

Full Name:

pregnancy-associated plasma protein A, pappalysin 1

Calculated MW:

1627 aa, 181 kDa

Observed MW:

180-220 kDa

Purification Method:

Protein A purification

CloneNo.:

1G5A7

Applications

Tested Applications:

WB,IHC,ELISA

Species Specificity:

Human

Background Information

Pregnancy-associated plasma protein A (PAPPA) is a metalloproteinase secreted by human placenta, and it can interact with IGF-binding proteins (IGFBPs) to regulate the proteolysis and the bioavailability of insulin-like growth factor (IGF). Circulating PAPPA represents a consolidated biomarker in combined first-trimester screening tests, allowing an early prenatal diagnosis of chromosomal abnormalities, preeclampsia, and intrauterine growth restriction risk. PAPPA is highly expressed in placenta and pregnancy serum (PMID: 34974815, 34974815).

Storage

Storage:

Store at -80°C.

The product is shipped with ice packs. Upon receipt, store it immediately at -80°C

Storage Buffer:

PBS only

For technical support and original validation data for this product please contact:

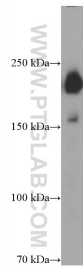
T: 4006900926

E: Proteintech-CN@ptglab.com

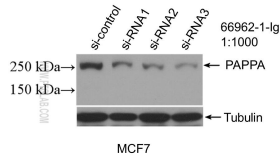
W: ptgcn.com

This product is exclusively available under Proteintech Group brand and is not available to purchase from any other manufacturer.

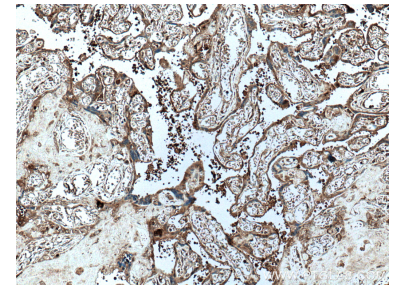
Selected Validation Data



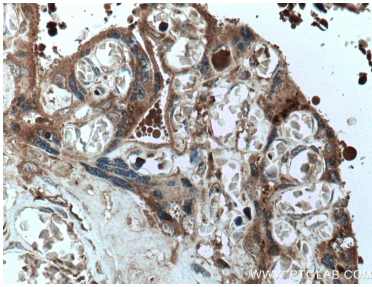
human placenta tissue were subjected to SDS PAGE followed by western blot with 66962-1-Ig (PAPA antibody) at dilution of 1:4000 incubated at room temperature for 1.5 hours. This data was developed using the same antibody clone with 66962-1-PBS in a different storage buffer formulation.



WB result of PAPA antibody (66962-1-Ig; 1:1000; incubated at room temperature for 1.5 hours) with sh-Control and sh-PAPA transfected MCF-7 cells. This data was developed using the same antibody clone with 66962-1-PBS in a different storage buffer formulation.



Immunohistochemical analysis of paraffin-embedded human placenta tissue slide using 66962-1-Ig (PAPA antibody) at dilution of 1:1000 (under 10x lens. Heat mediated antigen retrieval with Tris-EDTA buffer (pH 9.0). This data was developed using the same antibody clone with 66962-1-PBS in a different storage buffer formulation.



Immunohistochemical analysis of paraffin-embedded human placenta tissue slide using 66962-1-Ig (PAPA antibody) at dilution of 1:1000 (under 40x lens. Heat mediated antigen retrieval with Tris-EDTA buffer (pH 9.0). This data was developed using the same antibody clone with 66962-1-PBS in a different storage buffer formulation.