

For Research Use Only

# GPR116 Monoclonal antibody, PBS Only

Catalog Number: 66967-2-PBS



## Basic Information

<b>Catalog Number:</b> 66967-2-PBS	<b>GenBank Accession Number:</b> BC066121	<b>Purification Method:</b> Protein A purification
<b>Size:</b> 1 mg/ml	<b>GeneID (NCBI):</b> 221395	<b>CloneNo.:</b> 1H1B2
<b>Source:</b> Mouse	<b>UNIPROT ID:</b> Q8IZF2	
<b>Isotype:</b> IgG2b	<b>Full Name:</b> G protein-coupled receptor 116	
<b>Immunogen Catalog Number:</b> AG5820	<b>Calculated MW:</b> 1346 aa, 149 kDa	
	<b>Observed MW:</b> 150 kDa	

## Applications

**Tested Applications:**  
WB, Indirect ELISA

**Species Specificity:**  
human

## Background Information

GPR116 (ADGRF5, adhesion G protein-coupled receptor F5) is involved in the G protein-coupled receptor signaling pathway and cell surface receptor signaling pathway. may act upstream of or within several processes, including glomerular filtration; pharyngeal arch artery morphogenesis; and surfactant homeostasis.

## Storage

**Storage:**  
Store at -80°C.  
**The product is shipped with ice packs. Upon receipt, store it immediately at -80°C**

**Storage Buffer:**  
PBS Only

For technical support and original validation data for this product please contact:

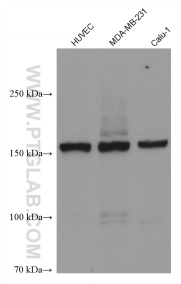
T: 4006900926

E: [Proteintech-CN@ptglab.com](mailto:Proteintech-CN@ptglab.com)

W: [ptgcn.com](http://ptgcn.com)

**This product is exclusively available under Proteintech Group brand and is not available to purchase from any other manufacturer.**

## Selected Validation Data



Various lysates were subjected to SDS PAGE followed by western blot with 66967-2-Ig (GPR116 antibody) at dilution of 1:5000 incubated at room temperature for 1.5 hours. This data was developed using the same antibody clone with 66967-2-PBS in a different storage buffer formulation.