

For Research Use Only

# EPHX1 Monoclonal antibody

Catalog Number: 66982-1-Ig **Featured Product**



## Basic Information

**Catalog Number:**

66982-1-Ig

**Size:**

1500 µg/ml

**Source:**

Mouse

**Isotype:**

IgG2b

**Immunogen Catalog Number:**

AG25820

**GenBank Accession Number:**

BC003567

**GeneID (NCBI):**

2052

**UNIPROT ID:**

P07099

**Full Name:**

epoxide hydrolase 1, microsomal (xenobiotic)

**Calculated MW:**

53 kDa

**Observed MW:**

53 kDa

**Purification Method:**

Protein A purification

**CloneNo.:**

1B6A2

**Recommended Dilutions:**

WB 1:5000-1:50000

## Applications

**Tested Applications:**

WB, ELISA

**Species Specificity:**

Human, Mouse

**Positive Controls:**

WB : HeLa cells, A549 cells, 4T1 cells, HepG2 cells, L02 cells, NCI-H1299 cells

## Background Information

EPHX1, also known as EPHX and EPOX, belongs to the peptidase S33 family. EPHX1 is an evolutionarily highly conserved biotransformation enzyme expressed in nearly all tissues and localized mainly in the microsomal fraction of the endoplasmic reticulum of eukaryotic cells. EPHX1 plays a role in the metabolism of endogenous lipids such as epoxide-containing fatty acids. The calculated molecular weight of EPHX1 is 53 kDa (PMID: 26216302).

## Storage

**Storage:**

Store at -20°C. Stable for one year after shipment.

**Storage Buffer:**

PBS with 0.1% sodium azide and 50% glycerol pH 7.3.

Aliquoting is unnecessary for -20°C storage

For technical support and original validation data for this product please contact:

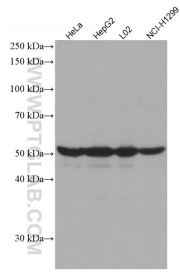
T: 4006900926

E: [Proteintech-CN@ptglab.com](mailto:Proteintech-CN@ptglab.com)

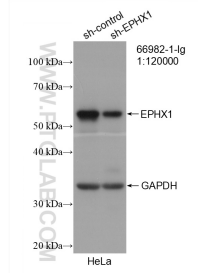
W: [ptgcn.com](http://ptgcn.com)

**This product is exclusively available under Proteintech Group brand and is not available to purchase from any other manufacturer.**

## Selected Validation Data



Various lysates were subjected to SDS PAGE followed by western blot with 66982-1-Ig (EPHX1 antibody) at dilution of 1:10000 incubated at room temperature for 1.5 hours.



WB result of EPHX1 antibody (66982-1-Ig; 1:120000; incubated at room temperature for 1.5 hours) with sh-Control and sh-EPHX1 transfected HeLa cells.