

For Research Use Only

SLC4A1 Monoclonal antibody, PBS Only (Detector)

Catalog Number: 66984-3-PBS



Basic Information

Catalog Number:

66984-3-PBS

Size:

1 mg/ml

Source:

Mouse

Isotype:

IgG3

Immunogen Catalog Number:

AG28058

GenBank Accession Number:

BC101570

GeneID (NCBI):

6521

UNIPROT ID:

P02730

Full Name:

solute carrier family 4, anion
exchanger, member 1 (erythrocyte
membrane protein band 3, Diego
blood group)

Calculated MW:

911 aa, 102 kDa

Purification Method:

Protein A Magarose purification

CloneNo.:

1C2H1

Applications

Tested Applications:

Cytometric bead array, Indirect ELISA

Species Specificity:

human

Background Information

Storage

Storage:

Store at -80°C.

The product is shipped with ice packs. Upon receipt, store it immediately at -80°C

Storage Buffer:

PBS Only

For technical support and original validation data for this product please contact:

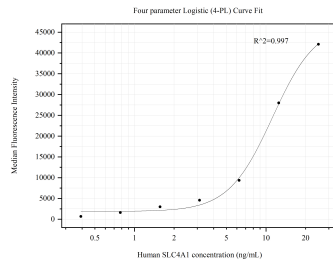
T: 4006900926

E: Proteintech-CN@ptglab.com

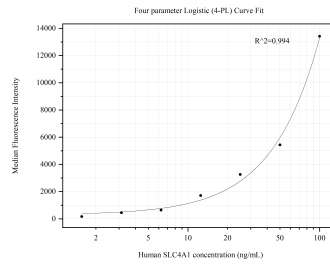
W: ptgcn.com

This product is exclusively available under Proteintech Group brand and is not available to purchase from any other manufacturer.

Selected Validation Data



Cytometric bead array standard curve of MP50547-1, SLC4A1 Monoclonal Matched Antibody Pair, PBS Only. Capture antibody: 66984-2-PBS. Detection antibody: 66984-3-PBS. Standard: Ag28058. Range: 0.391-25 ng/mL



Cytometric bead array standard curve of MP50547-3, SLC4A1 Monoclonal Matched Antibody Pair, PBS Only. Capture antibody: 66984-4-PBS. Detection antibody: 66984-3-PBS. Standard: Ag28058. Range: 1.563-100 ng/mL