

For Research Use Only

SLC4A1 Monoclonal antibody, PBS Only (Capture)

Catalog Number: 66984-4-PBS



Basic Information

Catalog Number: 66984-4-PBS	GenBank Accession Number: BC101570	Purification Method: Protein G purification
Size: 1 mg/ml	GeneID (NCBI): 6521	CloneNo.: 4G3C11
Source: Mouse	UNIPROT ID: P02730	
Isotype: IgG1	Full Name: solute carrier family 4, anion exchanger, member 1 (erythrocyte membrane protein band 3, Diego blood group)	
Immunogen Catalog Number: AG28058	Calculated MW: 911 aa, 102 kDa	

Applications

Tested Applications:
Cytometric bead array, Indirect ELISA

Species Specificity:
human

Background Information

Storage

Storage:
Store at -80°C.
The product is shipped with ice packs. Upon receipt, store it immediately at -80°C

Storage Buffer:
PBS Only

For technical support and original validation data for this product please contact:

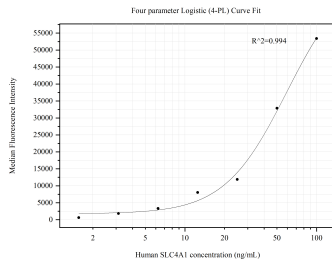
T: 4006900926

E: Proteintech-CN@ptglab.com

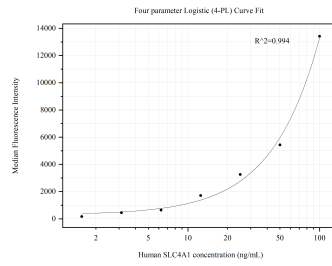
W: ptgcn.com

This product is exclusively available under Proteintech Group brand and is not available to purchase from any other manufacturer.

Selected Validation Data



Cytometric bead array standard curve of MP50547-2, SLC4A1 Monoclonal Matched Antibody Pair, PBS Only. Capture antibody: 66984-4-PBS. Detection antibody: 66984-5-PBS. Standard:Ag28058. Range: 1.563-100 ng/mL.



Cytometric bead array standard curve of MP50547-3, SLC4A1 Monoclonal Matched Antibody Pair, PBS Only. Capture antibody: 66984-4-PBS. Detection antibody: 66984-3-PBS. Standard:Ag28058. Range: 1.563-100 ng/mL.