

For Research Use Only

# PTPRO Monoclonal antibody, PBS Only



Catalog Number: 67000-1-PBS

## Basic Information

Catalog Number:

67000-1-PBS

Size:

1 mg/ml

Source:

Mouse

Isotype:

IgG2b

Immunogen Catalog Number:

AG8284

GenBank Accession Number:

BC035960

GeneID (NCBI):

5800

UNIPROT ID:

Q16827

Full Name:

protein tyrosine phosphatase, receptor type, O

Calculated MW:

138 kDa

Observed MW:

160 kDa, 180-220 kDa

Purification Method:

Protein A purification

CloneNo.:

2F2B4

## Applications

Tested Applications:

WB, Indirect ELISA, IHC, IF

Species Specificity:

Human, Pig

## Background Information

PTPRO (receptor-type tyrosine-protein phosphatase O) is also named as GLEPP1, PTPU2 and belongs to the protein-tyrosine phosphatase family. The protein is a receptor-like membrane protein tyrosine phosphatase expressed at the apical membrane of the podocyte foot processes in the kidney (PMID: 21722858). The 1,159-amino acid predicted mature protein contains a large extracellular domain, a single transmembrane domain, and a single intracellular PTPase domain. Defects in PTPRO are the cause of nephrotic syndrome type 6 (NPHS6). In reducing conditions, PTPRO can form a smear from 180 to 220 kDa; In non-reducing conditions, a band appears around 350 kDa, which likely represents the dimeric form of full-length PTPRO (PMID: 19573017).

## Storage

Storage:

Store at -80°C.

Storage Buffer:

PBS Only

For technical support and original validation data for this product please contact:

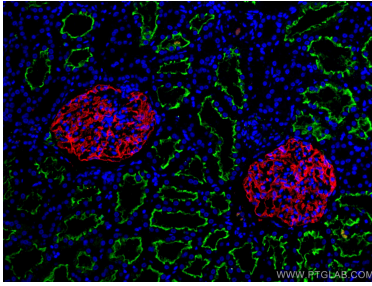
T: 4006900926

E: [Proteintech-CN@ptglab.com](mailto:Proteintech-CN@ptglab.com)

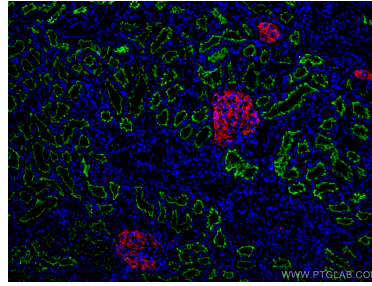
W: [ptgcn.com](http://ptgcn.com)

This product is exclusively available under Proteintech Group brand and is not available to purchase from any other manufacturer.

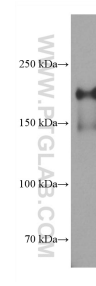
## Selected Validation Data



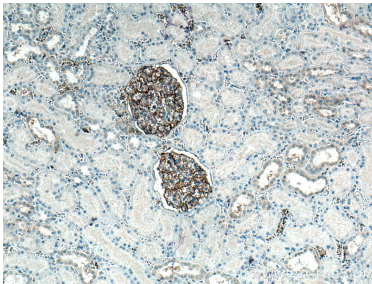
Immunofluorescent analysis of (4% PFA) fixed human kidney tissue using PTPRO antibody (67000-1-Ig, Clone: 2F2B4) at dilution of 1:800 and CoraLite®594-Conjugated AffiniPure Goat Anti-Mouse IgG(H+L), ACE2 antibody (21115-1-AP, green). This data was developed using the same antibody clone with 67000-1-PBS in a different storage buffer formulation.



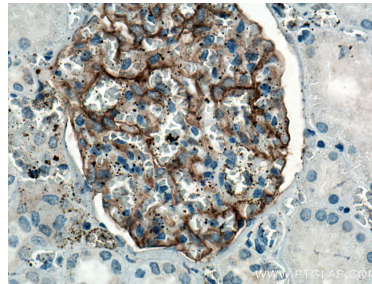
Immunofluorescent analysis of (4% PFA) fixed human kidney tissue using PTPRO antibody (67000-1-Ig, Clone: 2F2B4) at dilution of 1:800 and CoraLite®594-Conjugated AffiniPure Goat Anti-Mouse IgG(H+L), ACE2 antibody (21115-1-AP, green). This data was developed using the same antibody clone with 67000-1-PBS in a different storage buffer formulation.



pig kidney tissue were subjected to SDS PAGE followed by western blot with 67000-1-Ig (PTPRO antibody) at dilution of 1:2000 incubated at room temperature for 1.5 hours. This data was developed using the same antibody clone with 67000-1-PBS in a different storage buffer formulation.



Immunohistochemical analysis of paraffin-embedded human kidney tissue slide using 67000-1-Ig (PTPRO antibody) at dilution of 1:3000 (under 10x lens. Heat mediated antigen retrieval with Tris-EDTA buffer (pH 9.0). This data was developed using the same antibody clone with 67000-1-PBS in a different storage buffer formulation.



Immunohistochemical analysis of paraffin-embedded human kidney tissue slide using 67000-1-Ig (PTPRO antibody) at dilution of 1:3000 (under 40x lens. Heat mediated antigen retrieval with Tris-EDTA buffer (pH 9.0). This data was developed using the same antibody clone with 67000-1-PBS in a different storage buffer formulation.