

For Research Use Only

Ribosomal protein L4 Monoclonal antibody, PBS Only



Catalog Number: 67028-1-PBS

Basic Information

Catalog Number: 67028-1-PBS	GenBank Accession Number: BC009888	Purification Method: Protein A purification
Size: 1mg/ml	GeneID (NCBI): 6124	CloneNo.: 3C7A8
Source: Mouse	UNIPROT ID: P36578	
Isotype: IgG1	Full Name: ribosomal protein L4	
Immunogen Catalog Number: AG28728	Calculated MW: 48 kDa	
	Observed MW: 48 kDa	

Applications

Tested Applications:
Indirect ELISA, IF/ICC, IHC, WB

Species Specificity:
rat, mouse, human

Background Information

60S ribosomal protein L4 is encoded by RPL4 (or RPL1) gene. RPL4 is a component of 60S subunit of ribosome, and belongs to the L4E family. By interacting with c-Myb, RPL4 plays a important role in c-myc expression in response to growth factor and nutritional signals. Recently RPL4 was reported to be able to increase efficiency of viral recoding sequence.

Storage

Storage:
Store at -80°C.
The product is shipped with ice packs. Upon receipt, store it immediately at -80°C

Storage Buffer:
PBS Only

For technical support and original validation data for this product please contact:

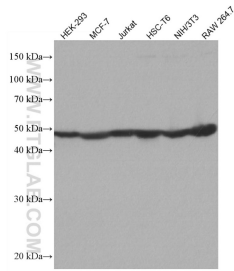
T: 4006900926

E: Proteintech-CN@ptglab.com

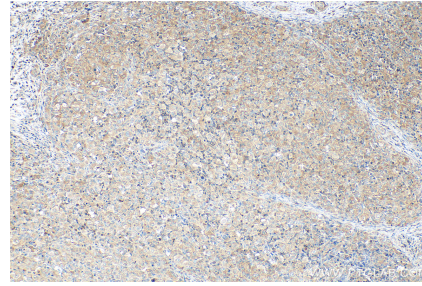
W: ptgcn.com

This product is exclusively available under Proteintech Group brand and is not available to purchase from any other manufacturer.

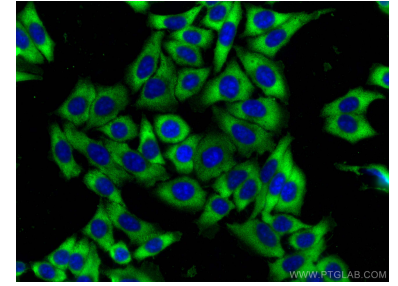
Selected Validation Data



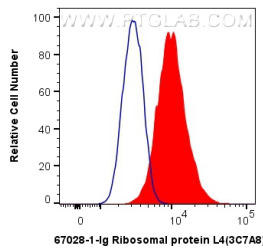
Various lysates were subjected to SDS PAGE followed by western blot with 67028-1-Ig (Ribosomal protein L4 antibody) at dilution of 1:10000 incubated at room temperature for 1.5 hours. This data was developed using the same antibody clone with 67028-1-PBS in a different storage buffer formulation.



Immunohistochemical analysis of paraffin-embedded human lymphoma tissue slide using 67028-1-Ig (Ribosomal protein L4 antibody) at dilution of 1:2000 (under 10x lens). Heat mediated antigen retrieval with Tris-EDTA buffer (pH 9.0). This data was developed using the same antibody clone with 67028-1-PBS in a different storage buffer formulation.



Immunofluorescent analysis of (-20°C Ethanol) fixed HepG2 cells using Ribosomal protein L4 antibody (67028-1-Ig, Clone: 3C7A8) at dilution of 1:400 and CoraLite®488-Conjugated AffiniPure Goat Anti-Mouse IgG(H+L). This data was developed using the same antibody clone with 67028-1-PBS in a different storage buffer formulation.



1X10⁶ HepG2 cells were intracellularly stained with 0.4 ug Anti-Human Ribosomal protein L4 (67028-1-Ig, Clone:3C7A8) and CoraLite®488-Conjugated AffiniPure Goat Anti-Mouse IgG(H+L) at dilution 1:1000 (red), or 0.4 ug Mouse IgG1 Isotype Control (MOPC-21) (65124-1-Ig, Clone: MOPC-21) (blue). Cells were fixed with 4% PFA and permeabilized with Flow Cytometry Perm Buffer (PF00011-C). This data was developed using the same antibody clone with 67028-1-PBS in a

