

For Research Use Only

# MLX Monoclonal antibody

Catalog Number: 67042-1-Ig



## Basic Information

Catalog Number:

67042-1-Ig

Size:

2200 µg/ml

Source:

Mouse

Isotype:

IgG1

Immunogen Catalog Number:

AG28729

GenBank Accession Number:

BC010689

GeneID (NCBI):

6945

UNIPROT ID:

Q9UH92

Full Name:

MAX-like protein X

Calculated MW:

298 aa, 33 kDa

Observed MW:

33 kDa

Purification Method:

Protein G purification

CloneNo.:

2A8D2

Recommended Dilutions:

WB 1:1000-1:6000

IHC 1:150-1:600

IF/ICC 1:200-1:800

## Applications

Tested Applications:

WB, IF/ICC, IHC, ELISA

Species Specificity:

Human

**Note-IHC: suggested antigen retrieval with TE buffer pH 9.0; (\*) Alternatively, antigen retrieval may be performed with citrate buffer pH 6.0**

Positive Controls:

WB : HeLa cells, HEK-293 cells, HepG2 cells, Jurkat cells

IHC : human breast cancer tissue, human liver cancer tissue

IF/ICC : HepG2 cells,

## Background Information

### Storage

Storage:

Store at -20°C. Stable for one year after shipment.

Storage Buffer:

PBS with 0.02% sodium azide and 50% glycerol pH 7.3.

Aliquoting is unnecessary for -20°C storage

For technical support and original validation data for this product please contact:

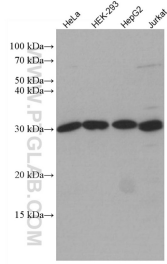
T: 4006900926

E: Proteintech-CN@ptglab.com

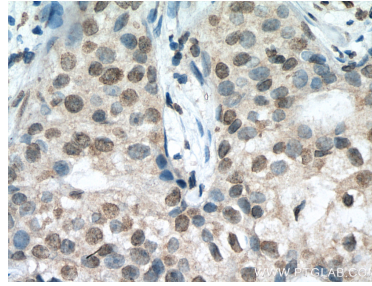
W: ptgcn.com

**This product is exclusively available under Proteintech Group brand and is not available to purchase from any other manufacturer.**

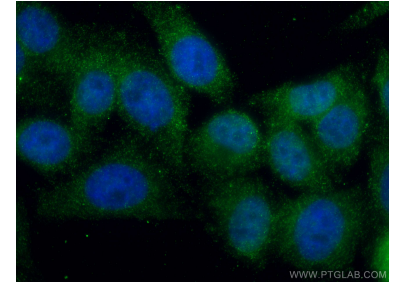
## Selected Validation Data



Various lysates were subjected to SDS PAGE followed by western blot with 67042-1-Ig (MLX antibody) at dilution of 1:3000 incubated at room temperature for 1.5 hours.



Immunohistochemical analysis of paraffin-embedded human breast cancer tissue slide using 67042-1-Ig (MLX antibody) at dilution of 1:300 (under 40x lens). Heat mediated antigen retrieval with Tris-EDTA buffer (pH 9.0).



Immunofluorescent analysis of (4% PFA) fixed HepG2 cells using MLX antibody (67042-1-Ig, Clone: 2A8D2 ) at dilution of 1:400 and CoraLite®488-Conjugated AffiniPure Goat Anti-Mouse IgG(H+L). DAPI (blue).



Immunofluorescent analysis of (4% PFA) fixed HepG2 cells using MLX antibody (67042-1-Ig, Clone: 2A8D2 ) at dilution of 1:800 and CoraLite®488-Conjugated AffiniPure Goat Anti-Mouse IgG(H+L), CL594-phalloidin (red).