

For Research Use Only

MLX Monoclonal antibody, PBS Only

Catalog Number: 67042-1-PBS



Basic Information

| | | |
|---|--|---|
| Catalog Number: 67042-1-PBS | GenBank Accession Number: BC010689 | Purification Method: Protein G purification |
| Size: 1 mg/ml | GeneID (NCBI): 6945 | CloneNo.: 2A8D2 |
| Source: Mouse | UNIPROT ID: Q9UH92 | |
| Isotype: IgG1 | Full Name: MAX-like protein X | |
| Immunogen Catalog Number: AG28729 | Calculated MW: 298 aa, 33 kDa | |
| | Observed MW: 33 kDa | |

Applications

Tested Applications:
WB, IF, IHC, Indirect ELISA

Species Specificity:
Human

Background Information

Storage

Storage:
Store at -80°C.
The product is shipped with ice packs. Upon receipt, store it immediately at -80°C

Storage Buffer:
PBS Only

For technical support and original validation data for this product please contact:

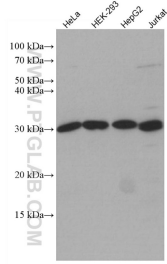
T: 4006900926

E: Proteintech-CN@ptglab.com

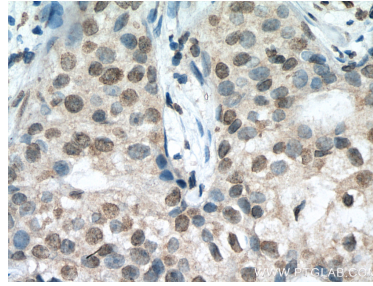
W: ptgcn.com

This product is exclusively available under Proteintech Group brand and is not available to purchase from any other manufacturer.

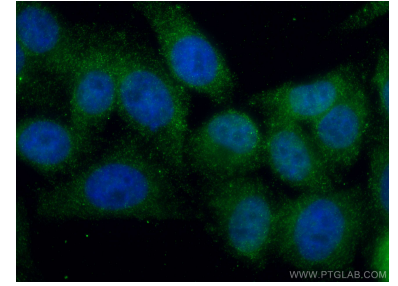
Selected Validation Data



Various lysates were subjected to SDS PAGE followed by western blot with 67042-1-Ig (MLX antibody) at dilution of 1:3000 incubated at room temperature for 1.5 hours. This data was developed using the same antibody clone with 67042-1-PBS in a different storage buffer formulation.



Immunohistochemical analysis of paraffin-embedded human breast cancer tissue slide using 67042-1-Ig (MLX antibody) at dilution of 1:300 (under 40x lens). Heat mediated antigen retrieval with Tris-EDTA buffer (pH 9.0). This data was developed using the same antibody clone with 67042-1-PBS in a different storage buffer formulation.



Immunofluorescent analysis of (4% PFA) fixed HepG2 cells using MLX antibody (67042-1-Ig, Clone: 2A8D2) at dilution of 1:400 and CoraLite®488-Conjugated AffiniPure Goat Anti-Mouse IgG(H+L). DAPI (blue). This data was developed using the same antibody clone with 67042-1-PBS in a different storage buffer formulation.



Immunofluorescent analysis of (4% PFA) fixed HepG2 cells using MLX antibody (67042-1-Ig, Clone: 2A8D2) at dilution of 1:800 and Coralite®488-Conjugated AffiniPure Goat Anti-Mouse IgG(H+L), CL594-phalloidin (red). This data was developed using the same antibody clone with 67042-1-PBS in a different storage buffer formulation.