

For Research Use Only

# MCM5 Monoclonal antibody

Catalog Number: 67049-1-Ig **2 Publications**



## Basic Information

Catalog Number:

67049-1-Ig

Size:

2400 µg/ml

Source:

Mouse

Isotype:

IgG1

Immunogen Catalog Number:

AG28704

GenBank Accession Number:

BC000142

GeneID (NCBI):

4174

UNIPROT ID:

P33992

Full Name:

minichromosome maintenance  
complex component 5

Calculated MW:

82 kDa

Observed MW:

82-88 kDa

Purification Method:

Protein G purification

CloneNo.:

3B7F8

Recommended Dilutions:

WB 1:5000-1:20000

IF/ICC 1:50-1:500

## Applications

Tested Applications:

IF/ICC, WB, ELISA

Cited Applications:

WB, IF

Species Specificity:

Human, mouse, rat

Cited Species:

human, mouse

Positive Controls:

WB : Jurkat cells, A375 cells, HeLa cells, ROS1728 cells,  
NIH/3T3 cells, RAW 264.7 cells

IF/ICC : HepG2 cells,

## Background Information

Minichromosome maintenance, *S. Cerevisiae*, homolog of 5(MCM5), one component of the complex of MCM2-7, which is the putative replicative essential for once per cell cycle DNA replication initiation and elongation in eukaryotic cells. The MCM complex form a hexameric ring through the interaction surfaces of two neighboring subunits.

## Notable Publications

Author	Pubmed ID	Journal	Application
Minhong Shen	35121987	Nat Cancer	WB
Yingying Jiang	34111560	Mol Ther	IF

## Storage

Storage:

Store at -20°C. Stable for one year after shipment.

Storage Buffer:

PBS with 0.02% sodium azide and 50% glycerol pH 7.3.

Aliquoting is unnecessary for -20°C storage

For technical support and original validation data for this product please contact:

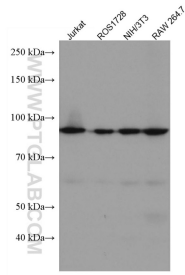
T: 4006900926

E: Proteintech-CN@ptglab.com

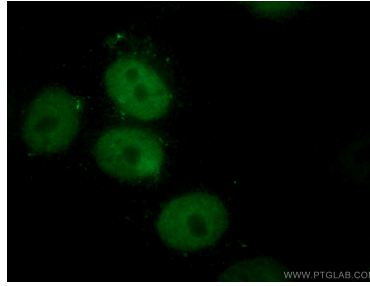
W: ptgcn.com

**This product is exclusively available under Proteintech Group brand and is not available to purchase from any other manufacturer.**

## Selected Validation Data



Various lysates were subjected to SDS PAGE followed by western blot with 67049-1-Ig (MCM5 antibody) at dilution of 1:10000 incubated at room temperature for 1.5 hours.



Immunofluorescent analysis of (4% PFA) fixed HepG2 cells using 67049-1-Ig (MCM5 antibody) at dilution of 1:100 and CoraLite488-Conjugated AffiniPure Goat Anti-Mouse IgG(H+L).