

For Research Use Only

# ELAVL2 Monoclonal antibody, PBS Only



Catalog Number: 67097-1-PBS

## Basic Information

<b>Catalog Number:</b> 67097-1-PBS	<b>GenBank Accession Number:</b> BC030692	<b>Purification Method:</b> Protein G purification
<b>Size:</b> 1 mg/ml	<b>GeneID (NCBI):</b> 1993	<b>CloneNo.:</b> 2D8C10
<b>Source:</b> Mouse	<b>UNIPROT ID:</b> Q12926	
<b>Isotype:</b> IgG1	<b>Full Name:</b> ELAV (embryonic lethal, abnormal vision, Drosophila)-like 2 (Hu antigen B)	
<b>Immunogen Catalog Number:</b> AG28310	<b>Calculated MW:</b> 39 kDa	
	<b>Observed MW:</b> 35-40 kDa	

## Applications

**Tested Applications:**  
WB, Indirect ELISA

**Species Specificity:**  
Human, mouse, rat, pig, rabbit

## Background Information

The ELAV (embryonic lethal abnormal visual system) gene of *D. Melanogaste* is the the first identified member of a family of neuronal RNA binding proteins that is conserved in metazoans. The proteins in this family contain three RNA Recognition Motifs (RRM), with a hinge region separating the second and third RRM and an optional non-conserved N-terminal region. The hinge includes signals essential for nuclear export and subcellular localization [PMID:9874760]. Elav is expressed specifically in the neurons and is required for the correct development and maintenance of the nervous system. ELAVL2 can binds RNA, and recognize a GAAA motif. In addition, it can bind to its own 3'-UTR, the FOS 3'-UTR and the ID 3'-UTR [PMID:18715504,21695151].

## Storage

**Storage:**  
Store at -80°C.

**Storage Buffer:**  
PBS Only

For technical support and original validation data for this product please contact:

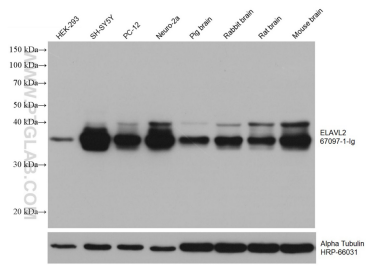
T: 4006900926

E: Proteintech-CN@ptglab.com

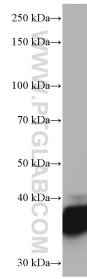
W: ptgcn.com

**This product is exclusively available under Proteintech Group brand and is not available to purchase from any other manufacturer.**

## Selected Validation Data



Various lysates were subjected to SDS PAGE followed by western blot with 67097-1-Ig (ELAVL2 antibody) at dilution of 1:10000 incubated at room temperature for 1.5 hours. The membrane was stripped and reblotted with HRP-conjugated Alpha Tubulin Monoclonal antibody (HRP-66031) as loading control. This data was developed using the same antibody clone with 67097-1-PBS in a different storage buffer formulation.



Neuro-2a cells were subjected to SDS PAGE followed by western blot with 67097-1-Ig (ELAVL2 antibody) at dilution of 1:10000 incubated at room temperature for 1.5 hours. This data was developed using the same antibody clone with 67097-1-PBS in a different storage buffer formulation.