

For Research Use Only

# IDE Monoclonal antibody, PBS Only

Catalog Number: 67106-1-PBS

Featured Product



## Basic Information

<b>Catalog Number:</b> 67106-1-PBS	<b>GenBank Accession Number:</b> BC096336	<b>Purification Method:</b> Protein A purification
<b>Size:</b> 1 mg/ml	<b>GeneID (NCBI):</b> 3416	<b>CloneNo.:</b> 3E10G1
<b>Source:</b> Mouse	<b>UNIPROT ID:</b> P14735	
<b>Isotype:</b> IgG2b	<b>Full Name:</b> Abeta degrading protease	
<b>Immunogen Catalog Number:</b> AG17161	<b>Calculated MW:</b> 1019 aa, 118 kDa	
	<b>Observed MW:</b> 100-120 kDa	

## Applications

**Tested Applications:**  
WB, Indirect ELISA

**Species Specificity:**  
Human, Mouse, Rat

## Background Information

IDE (INS-degrading enzyme) belongs to the peptidase M16 family. It is also known as insulysin and is a 110-kD neutral metallopeptidase that can degrade a number of peptides, including INS and beta-amyloid (PMID:9830016). The reduction of IDE expression may be a risk factor for AD, and that IDE may interact with APOE status to affect beta-amyloid metabolism (PMID:12507914). It can exist as a homodimer and form higher oligomers (PMID:17613531).

## Storage

**Storage:**  
Store at -80°C.  
**The product is shipped with ice packs. Upon receipt, store it immediately at -80°C**

**Storage Buffer:**  
PBS Only

For technical support and original validation data for this product please contact:

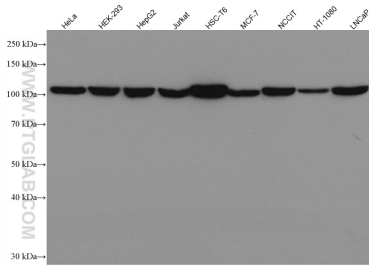
T: 4006900926

E: Proteintech-CN@ptglab.com

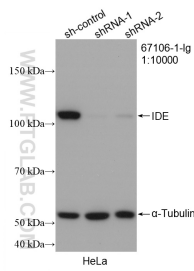
W: ptgcn.com

**This product is exclusively available under Proteintech Group brand and is not available to purchase from any other manufacturer.**

## Selected Validation Data



Various lysates were subjected to SDS PAGE followed by western blot with 67106-1-Ig (IDE antibody) at dilution of 1:10000 incubated at room temperature for 1.5 hours. This data was developed using the same antibody clone with 67106-1-PBS in a different storage buffer formulation.



WB result of IDE antibody (67106-1-Ig: 1:10000; incubated at room temperature for 1.5 hours) with sh-Control and sh-IDE transfected HeLa cells. This data was developed using the same antibody clone with 67106-1-PBS in a different storage buffer formulation.