

For Research Use Only

TRIM21 Monoclonal antibody, PBS Only (Capture)



Catalog Number: 67136-1-PBS

Featured Product

Basic Information

Catalog Number:

67136-1-PBS

Size:

1mg/ml

Source:

Mouse

Isotype:

IgG1

Immunogen Catalog Number:

AG28377

GenBank Accession Number:

BC010861

GeneID (NCBI):

6737

UNIPROT ID:

P19474

Full Name:

tripartite motif-containing 21

Calculated MW:

475 aa, 54 kDa

Observed MW:

52 kDa

Purification Method:

Protein A purification

CloneNo.:

1E8B9

Applications

Tested Applications:

WB, IHC, IF/ICC, Cytometric bead array, Indirect ELISA

Species Specificity:

human, mouse, rat

Background Information

TRIM21 has multiple N-terminal zinc finger motifs (has E3 ligase activity), a central leucine zipper, and a potential N-glycosylation site. TRIM3 is a E3 ubiquitin-protein ligase. It can form a ubiquitin ligase complex with E2 UBE2D2, which function not only for the ubiquitination of USP4 and IKKB but also for its self-ubiquitination. It has a role in the regulation of the cell cycle progression and could enhance the decapping activity of DCP2. It can exist in all mammalian cells as a ribonucleoprotein particle, which composed of a single polypeptide and 1 of 4 small RNA molecules. TRIM21 exists various isoforms and range molecular weight of isoforms is about 42-45kDa and 49-54 kDa.

Storage

Storage:

Store at -80°C.

The product is shipped with ice packs. Upon receipt, store it immediately at -80°C

Storage Buffer:

PBS Only

For technical support and original validation data for this product please contact:

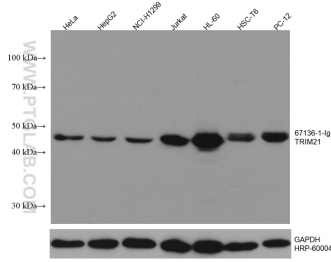
T: 4006900926

E: Proteintech-CN@ptglab.com

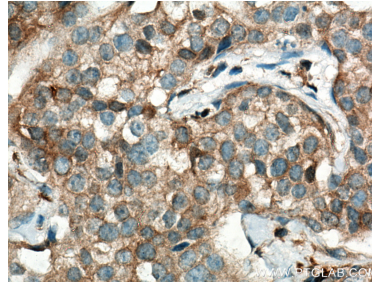
W: ptgcn.com

This product is exclusively available under Proteintech Group brand and is not available to purchase from any other manufacturer.

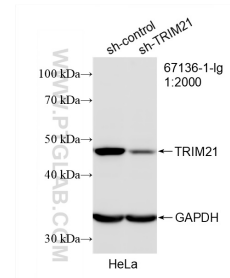
Selected Validation Data



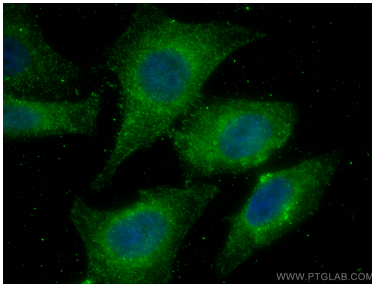
Various lysates were subjected to SDS PAGE followed by western blot with 67136-1-Ig (TRIM21 antibody) at dilution of 1:5000 incubated at room temperature for 1.5 hours. The membrane was stripped and reblotted with HRP-conjugated GAPDH Monoclonal antibody (HRP-60004) as loading control. This data was developed using the same antibody clone with 67136-1-PBS in a different storage buffer formulation.



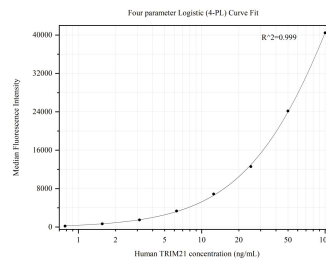
Immunohistochemical analysis of paraffin-embedded human breast cancer tissue slide using 67136-1-Ig (TRIM21 antibody) at dilution of 1:500 (under 40x lens). Heat mediated antigen retrieval with Tris-EDTA buffer (pH 9.0). This data was developed using the same antibody clone with 67136-1-PBS in a different storage buffer formulation.



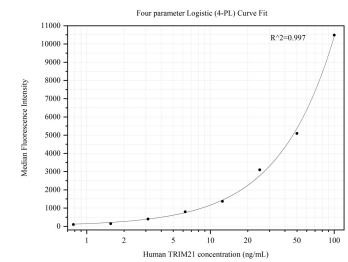
WB result of TRIM21 antibody (67136-1-Ig; 1:2000; incubated at room temperature for 1.5 hours) with sh-Control and sh-TRIM21 transfected HeLa cells. This data was developed using the same antibody clone with 67136-1-PBS in a different storage buffer formulation.



Immunofluorescent analysis of (4% PFA) fixed HepG2 cells using TRIM21 antibody (67136-1-Ig, Clone: 1E8B9) at dilution of 1:800 and CoraLite®488-Conjugated AffiniPure Goat Anti-Mouse IgG(H+L). This data was developed using the same antibody clone with 67136-1-PBS in a different storage buffer formulation.



Cytometric bead array standard curve of MP50371-2, TRIM21 Monoclonal Matched Antibody Pair, PBS Only. Capture antibody: 67136-1-PBS. Detection antibody: 67136-3-PBS. Standard: Ag28377. Range: 0.781-100 ng/mL.



Cytometric bead array standard curve of MP50371-4, TRIM21 Monoclonal Matched Antibody Pair, PBS Only. Capture antibody: 67136-1-PBS. Detection antibody: 67136-5-PBS. Standard: Ag28377. Range: 0.781-100 ng/mL.