

For Research Use Only

# CDC25B Monoclonal antibody, PBS Only



Catalog Number: 67145-1-PBS

## Basic Information

<b>Catalog Number:</b> 67145-1-PBS	<b>GenBank Accession Number:</b> BC006395	<b>Purification Method:</b> Protein A purification
<b>Size:</b> 1 mg/ml	<b>GeneID (NCBI):</b> 994	<b>CloneNo.:</b> 1H3A4
<b>Source:</b> Mouse	<b>UNIPROT ID:</b> P30305	
<b>Isotype:</b> IgG2b	<b>Full Name:</b> cell division cycle 25 homolog B (S. pombe)	
<b>Immunogen Catalog Number:</b> AG27193	<b>Calculated MW:</b> 65 kDa	
	<b>Observed MW:</b> 69 kDa	

## Applications

**Tested Applications:**  
WB, Indirect ELISA, IF

**Species Specificity:**  
Human, Mouse, rat

## Background Information

CDC25B, also named as CDC25HU2, belongs to the MPI phosphatase family. It is a tyrosine protein phosphatase which functions as a dosage-dependent inducer of mitotic progression. CDC25B directly dephosphorylates CDK1 and stimulates its kinase activity. The three isoforms seem to have a different level of activity.

## Storage

**Storage:**  
Store at -80°C.

**Storage Buffer:**  
PBS Only

For technical support and original validation data for this product please contact:

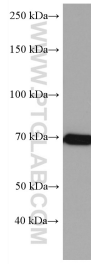
T: 4006900926

E: [Proteintech-CN@ptglab.com](mailto:Proteintech-CN@ptglab.com)

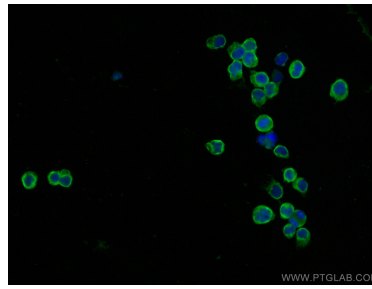
W: [ptgcn.com](http://ptgcn.com)

This product is exclusively available under Proteintech Group brand and is not available to purchase from any other manufacturer.

## Selected Validation Data



Sp2/O cells were subjected to SDS PAGE followed by western blot with 67145-1-Ig (CDC25B antibody) at dilution of 1:10000 incubated at room temperature for 1.5 hours. This data was developed using the same antibody clone with 67145-1-PBS in a different storage buffer formulation.



Immunofluorescent analysis of (4% PFA) fixed Jurkat cells using CDC25B antibody (67145-1-Ig, Clone: 1H3A4 ) at dilution of 1:400 and CoraLite®488-Conjugated AffiniPure Goat Anti-Mouse IgG(H+L). This data was developed using the same antibody clone with 67145-1-PBS in a different storage buffer formulation.