

For Research Use Only

# TROVE2 Monoclonal antibody, PBS Only



Catalog Number: 67149-1-PBS

## Basic Information

<b>Catalog Number:</b> 67149-1-PBS	<b>GenBank Accession Number:</b> BC036658	<b>Purification Method:</b> Protein A purification
<b>Size:</b> 1 mg/ml	<b>GeneID (NCBI):</b> 6738	<b>CloneNo.:</b> 2A4E5
<b>Source:</b> Mouse	<b>UNIPROT ID:</b> P10155	
<b>Isotype:</b> IgG2a	<b>Full Name:</b> TROVE domain family, member 2	
<b>Immunogen Catalog Number:</b> AG4379	<b>Calculated MW:</b> 60 kDa	
	<b>Observed MW:</b> 60 kDa	

## Applications

**Tested Applications:**  
WB, Indirect ELISA, IHC

**Species Specificity:**  
Human, Mouse, Rat

## Background Information

TROVE2, also named as RO60 or RoRNP, is a 538 amino acid protein, which is localized in cytoplasmic mRNP granules containing untranslated mRNAs. TROVE2 as a RNA-binding protein that binds to misfolded non-coding RNAs, pre-5S rRNA, and several small cytoplasmic RNA molecules known as Y RNAs. TROVE2 may stabilize some of these RNAs and protect them from degradation (PubMed:18056422). TROVE2 binds to endogenous Alu retroelements which are induced by type I IFN and stimulate proinflammatory cytokine secretion.

## Storage

**Storage:**  
Store at -80°C.  
**The product is shipped with ice packs. Upon receipt, store it immediately at -80°C**

**Storage Buffer:**  
PBS Only

For technical support and original validation data for this product please contact:

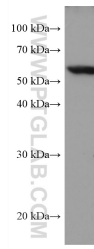
T: 4006900926

E: [Proteintech-CN@ptglab.com](mailto:Proteintech-CN@ptglab.com)

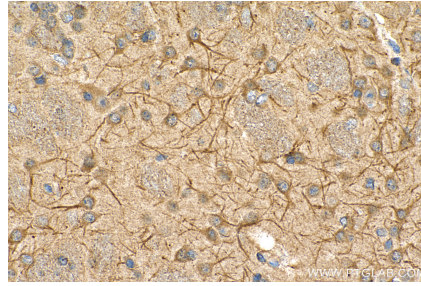
W: [ptgcn.com](http://ptgcn.com)

**This product is exclusively available under Proteintech Group brand and is not available to purchase from any other manufacturer.**

## Selected Validation Data



HeLa cells were subjected to SDS PAGE followed by western blot with 67149-1-Ig (TROVE2 antibody) at dilution of 1:10000 incubated at room temperature for 1.5 hours. This data was developed using the same antibody clone with 67149-1-PBS in a different storage buffer formulation.



Immunohistochemical analysis of paraffin-embedded mouse brain tissue slide using 67149-1-Ig (TROVE2 antibody) at dilution of 1:2000 (under 40x lens). Heat mediated antigen retrieval with Tris-EDTA buffer (pH 9.0). This data was developed using the same antibody clone with 67149-1-PBS in a different storage buffer formulation.