

For Research Use Only

CD138/Syndecan-1 Monoclonal antibody, PBS Only (Detector)



Catalog Number: 67155-1-PBS

Basic Information

Catalog Number: 67155-1-PBS	GenBank Accession Number: BC008765	Purification Method: Protein A purification
Size: 1mg/ml	GeneID (NCBI): 6382	CloneNo.: 4F3A8
Source: Mouse	UNIPROT ID: P18827	
Isotype: IgG2a	Full Name: syndecan 1	
Immunogen Catalog Number: AG0823	Calculated MW: 32.5 kDa	

Applications

Tested Applications:
IF, IHC, Sandwich ELISA, Indirect ELISA

Species Specificity:
Human

Background Information

Syndecan-1 (SDC1), also named CD138, is an integral membrane protein. It participates in cell proliferation, cell migration and cell-matrix interactions via its receptor for extracellular matrix proteins. It is a heparan sulfate proteoglycan expressed on the surface of, and actively shed by, myeloma cells. Altered syndecan-1 expression has been detected in several different tumor types. SDC1 was regarded as a useful marker for labeling normal and neoplastic plasma cells and plasmacytoid lymphomas.

Storage

Storage:
Store at -80°C.

Storage Buffer:
PBS Only

For technical support and original validation data for this product please contact:

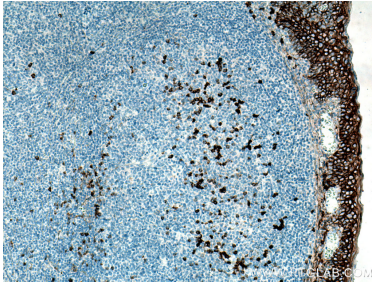
T: 4006900926

E: Proteintech-CN@ptglab.com

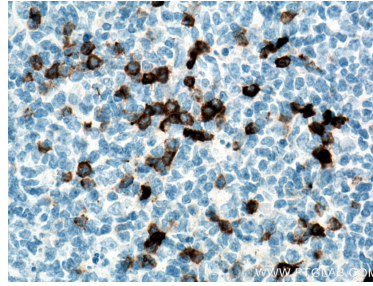
W: ptgcn.com

This product is exclusively available under Proteintech Group brand and is not available to purchase from any other manufacturer.

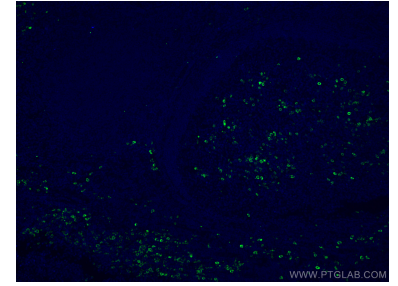
Selected Validation Data



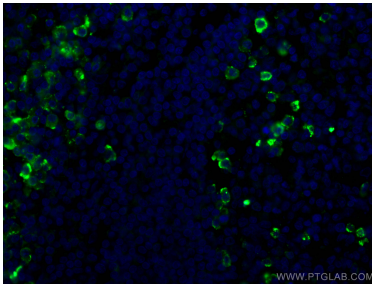
Immunohistochemical analysis of paraffin-embedded human tonsillitis tissue slide using 67155-1-Ig (SDC1,CD138 antibody) at dilution of 1:8000 (under 10x lens). Heat mediated antigen retrieval with Tris-EDTA buffer (pH 9.0). This data was developed using the same antibody clone with 67155-1-PBS in a different storage buffer formulation.



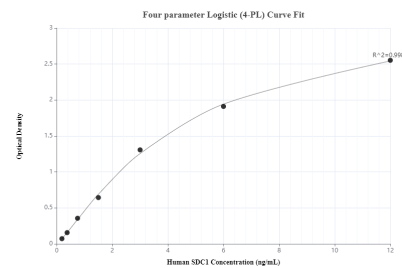
Immunohistochemical analysis of paraffin-embedded human tonsillitis tissue slide using 67155-1-Ig (SDC1,CD138 antibody) at dilution of 1:8000 (under 40x lens). Heat mediated antigen retrieval with Tris-EDTA buffer (pH 9.0). This data was developed using the same antibody clone with 67155-1-PBS in a different storage buffer formulation.



Immunofluorescent analysis of (4% PFA) fixed human tonsillitis tissue using CD138/Syndecan-1 antibody (67155-1-Ig, Clone: 4F3A8) at dilution of 1:400 and CoraLite®488-Conjugated AffiniPure Goat Anti-Mouse IgG(H+L). This data was developed using the same antibody clone with 67155-1-PBS in a different storage buffer formulation.



Immunofluorescent analysis of (4% PFA) fixed human tonsillitis tissue using CD138/Syndecan-1 antibody (67155-1-Ig, Clone: 4F3A8) at dilution of 1:400 and CoraLite®488-Conjugated AffiniPure Goat Anti-Mouse IgG(H+L). This data was developed using the same antibody clone with 67155-1-PBS in a different storage buffer formulation.



Sandwich ELISA standard curve of MP50044-1, SDC1,CD138 Monoclonal Matched Antibody Pair, PBS Only. Capture antibody: 60185-1-PBS. Detection antibody: 67155-1-PBS. Standard: Ag17733. Range: 0.188-12 ng/mL.