

For Research Use Only

# RASEF Monoclonal antibody, PBS Only



Catalog Number: 67159-1-PBS

## Basic Information

<b>Catalog Number:</b> 67159-1-PBS	<b>GenBank Accession Number:</b> BC023566	<b>Purification Method:</b> Protein A purification
<b>Size:</b> 1 mg/ml	<b>GeneID (NCBI):</b> 158158	<b>CloneNo.:</b> 1C2B2
<b>Source:</b> Mouse	<b>UNIPROT ID:</b> Q8IZ41	
<b>Isotype:</b> IgG2a	<b>Full Name:</b> RAS and EF-hand domain containing	
<b>Immunogen Catalog Number:</b> AG2149	<b>Calculated MW:</b> 740 aa, 83 kDa	
	<b>Observed MW:</b> 90 kDa	

## Applications

**Tested Applications:**  
WB, Indirect ELISA, IHC, IF

**Species Specificity:**  
Human, mouse

## Background Information

The RASEF (RAS and EF-hand domain-containing protein), a member of Rab GTPase protein family, contains a Rab GTPase domain in the C-terminal region, a coiled coil motif in an internal region as well as 2 EF hand domains which were of importance for binding to calcium ions in the N-terminus.

## Storage

**Storage:**  
Store at -80°C.  
**The product is shipped with ice packs. Upon receipt, store it immediately at -80°C**

**Storage Buffer:**  
PBS Only

For technical support and original validation data for this product please contact:

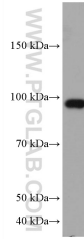
T: 4006900926

E: Proteintech-CN@ptglab.com

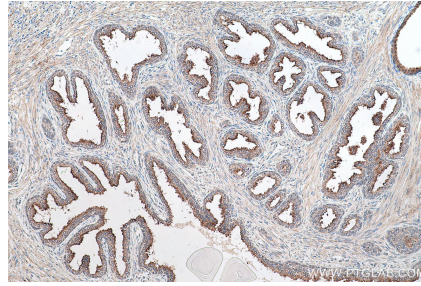
W: ptgcn.com

**This product is exclusively available under Proteintech Group brand and is not available to purchase from any other manufacturer.**

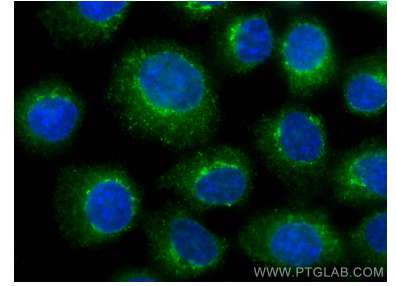
## Selected Validation Data



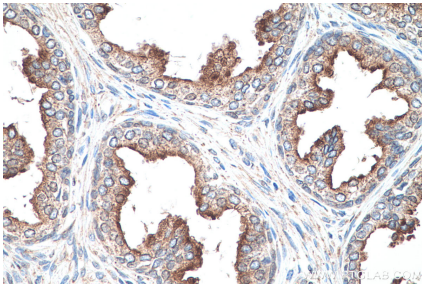
LNCaP cells were subjected to SDS PAGE followed by western blot with 67159-1-Ig (RASEF antibody) at dilution of 1:3000 incubated at room temperature for 1.5 hours. This data was developed using the same antibody clone with 67159-1-PBS in a different storage buffer formulation.



Immunohistochemical analysis of paraffin-embedded human prostate cancer tissue slide using 67159-1-Ig (RASEF antibody) at dilution of 1:1000 (under 10x lens). Heat mediated antigen retrieval with Tris-EDTA buffer (pH 9.0). This data was developed using the same antibody clone with 67159-1-PBS in a different storage buffer formulation.



Immunofluorescent analysis of (-20°C Methanol) fixed A431 cells using RASEF antibody (67159-1-Ig, Clone: 1C2B2) at dilution of 1:400 and CoraLite®488-Conjugated AffiniPure Goat Anti-Mouse IgG(H+L). This data was developed using the same antibody clone with 67159-1-PBS in a different storage buffer formulation.



Immunohistochemical analysis of paraffin-embedded human prostate cancer tissue slide using 67159-1-Ig (RASEF antibody) at dilution of 1:1000 (under 40x lens). Heat mediated antigen retrieval with Tris-EDTA buffer (pH 9.0). This data was developed using the same antibody clone with 67159-1-PBS in a different storage buffer formulation.