

For Research Use Only

DRG2 Monoclonal antibody, PBS Only



Catalog Number: 67164-1-PBS

Featured Product

Basic Information

Catalog Number:

67164-1-PBS

Size:

1mg/ml

Source:

Mouse

Isotype:

IgG2a

Immunogen Catalog Number:

AG6878

GenBank Accession Number:

BC000493

GeneID (NCBI):

1819

UNIPROT ID:

P55039

Full Name:

developmentally regulated GTP binding protein 2

Calculated MW:

41 kDa

Observed MW:

41 kDa

Purification Method:

Protein A purification

CloneNo.:

3A3E1

Applications

Tested Applications:

WB, IF, Indirect ELISA

Species Specificity:

Human, mouse, rat, pig

Background Information

Storage

Storage:

Store at -80°C.

The product is shipped with ice packs. Upon receipt, store it immediately at -80°C

Storage Buffer:

PBS Only

For technical support and original validation data for this product please contact:

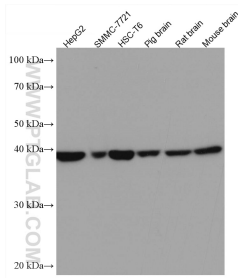
T: 4006900926

E: Proteintech-CN@ptglab.com

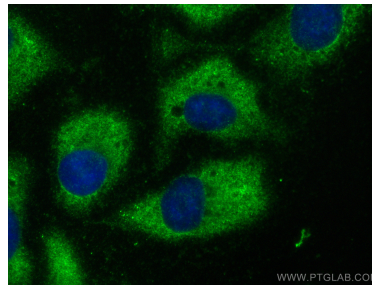
W: ptgcn.com

This product is exclusively available under Proteintech Group brand and is not available to purchase from any other manufacturer.

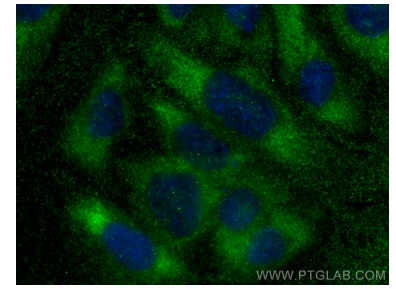
Selected Validation Data



Various lysates were subjected to SDS PAGE followed by western blot with 67164-1-Ig (DRG2 antibody) at dilution of 1:3000 incubated at room temperature for 1.5 hours. This data was developed using the same antibody clone with 67164-1-PBS in a different storage buffer formulation.



Immunofluorescent analysis of (-20°C Ethanol) fixed U2OS cells using DRG2 antibody (67164-1-Ig, Clone: 3A3E1) at dilution of 1:400 and CoraLite®488-Conjugated AffiniPure Goat Anti-Mouse IgG(H+L) (SA00013-1). This data was developed using the same antibody clone with 67164-1-PBS in a different storage buffer formulation.



Immunofluorescent analysis of (-20°C Methanol) fixed Saos-2 cells using DRG2 antibody (67164-1-Ig, Clone: 3A3E1) at dilution of 1:400 and CoraLite®488-Conjugated AffiniPure Goat Anti-Mouse IgG(H+L). This data was developed using the same antibody clone with 67164-1-PBS in a different storage buffer formulation.