

For Research Use Only

DMC1 Monoclonal antibody, PBS Only

Catalog Number: 67176-1-PBS



Basic Information

Catalog Number:

67176-1-PBS

Size:

1mg/ml

Source:

Mouse

Isotype:

IgG2a

Immunogen Catalog Number:

AG6951

GenBank Accession Number:

BC035658

GeneID (NCBI):

11144

UNIPROT ID:

Q14565

Full Name:

DMC1 dosage suppressor of mck1
homolog, meiosis-specific
homologous recombination (yeast)

Calculated MW:

165 aa, 18 kDa, 38 kDa

Observed MW:

37 kDa

Purification Method:

Protein A purification

CloneNo.:

2D5C9

Applications

Tested Applications:

WB,IP,Indirect ELISA,IHC,IF

Species Specificity:

human, mouse, rat

Background Information

Storage

Storage:

Store at -80°C.

The product is shipped with ice packs. Upon receipt, store it immediately at -80°C

Storage Buffer:

PBS Only

For technical support and original validation data for this product please contact:

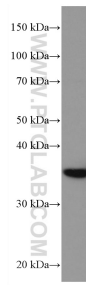
T: 4006900926

E: Proteintech-CN@ptglab.com

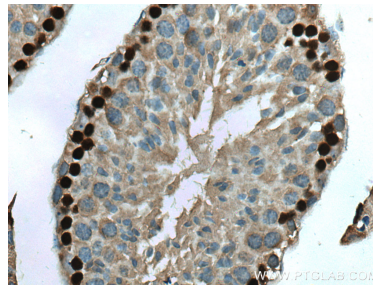
W: ptgcn.com

This product is exclusively available under Proteintech Group brand and is not available to purchase from any other manufacturer.

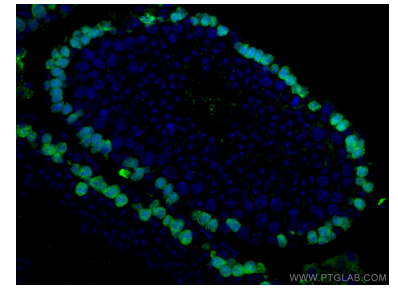
Selected Validation Data



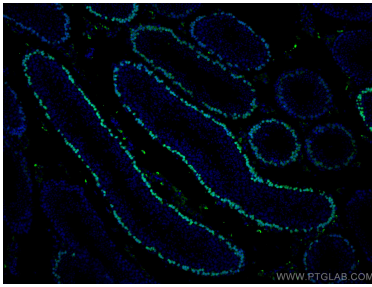
HeLa cells were subjected to SDS PAGE followed by western blot with 67176-1-Ig (DMC1 antibody) at dilution of 1:10000 incubated at room temperature for 1.5 hours. This data was developed using the same antibody clone with 67176-1-PBS in a different storage buffer formulation.



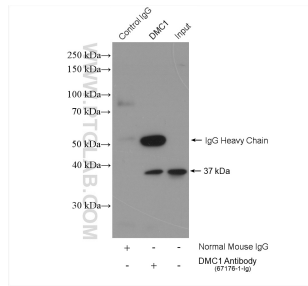
Immunohistochemical analysis of paraffin-embedded mouse testis tissue slide using 67176-1-Ig (DMC1 antibody) at dilution of 1:1000 (under 40x lens). Heat mediated antigen retrieval with Tris-EDTA buffer (pH 9.0). This data was developed using the same antibody clone with 67176-1-PBS in a different storage buffer formulation.



Immunofluorescent analysis of (4% PFA) fixed mouse testis tissue using DMC1 antibody (67176-1-Ig, Clone: 2D5C9) at dilution of 1:400 and CoraLite®488-Conjugated AffiniPure Goat Anti-Mouse IgG(H+L). DAPI (blue). This data was developed using the same antibody clone with 67176-1-PBS in a different storage buffer formulation.



Immunofluorescent analysis of (4% PFA) fixed mouse testis tissue using DMC1 antibody (67176-1-Ig, Clone: 2D5C9) at dilution of 1:400 and CoraLite®488-Conjugated AffiniPure Goat Anti-Mouse IgG(H+L). DAPI (blue). This data was developed using the same antibody clone with 67176-1-PBS in a different storage buffer formulation.



IP result of anti-DMC1 (IP:67176-1-Ig, 4ug; Detection:67176-1-Ig 1:1000) with mouse testis tissue lysate 2040 ug. This data was developed using the same antibody clone with 67176-1-PBS in a different storage buffer formulation.