

For Research Use Only

# DMAP1 Monoclonal antibody, PBS Only



Catalog Number: 67183-1-PBS

## Basic Information

<b>Catalog Number:</b> 67183-1-PBS	<b>GenBank Accession Number:</b> BC002855	<b>Purification Method:</b> Protein G purification
<b>Size:</b> 1 mg/ml	<b>GeneID (NCBI):</b> 55929	<b>CloneNo.:</b> 1A4E8
<b>Source:</b> Mouse	<b>UNIPROT ID:</b> Q9NPF5	
<b>Isotype:</b> IgG1	<b>Full Name:</b> DNA methyltransferase 1 associated protein 1	
<b>Immunogen Catalog Number:</b> AG28906	<b>Calculated MW:</b> 53 kDa	
	<b>Observed MW:</b> 60 kDa	

## Applications

**Tested Applications:**  
WB, Indirect ELISA, IF

**Species Specificity:**  
Human, Mouse, Rat

## Background Information

DMAP1 (DNA methyltransferase 1-associated protein 1) a component of the NuA4 histone acetyltransferase complex, was originally identified as an interacting molecule with DNA methyltransferase 1 (DNMT1) which co-localizes with PCNA at DNA replication foci. DMAP1 is required for DNA repair and acts against genomic instability. DMAP1 is widely implicated in transcription repression and activation via its interaction with multiple targets including histone deacetylase2 (HDAC2).

## Storage

**Storage:**  
Store at -80°C.

**Storage Buffer:**  
PBS Only

For technical support and original validation data for this product please contact:

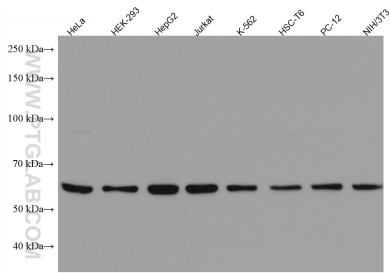
T: 4006900926

E: [Proteintech-CN@ptglab.com](mailto:Proteintech-CN@ptglab.com)

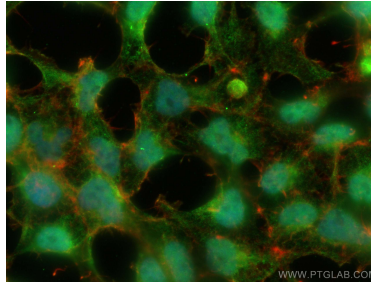
W: [ptgcn.com](http://ptgcn.com)

This product is exclusively available under Proteintech Group brand and is not available to purchase from any other manufacturer.

## Selected Validation Data



Various lysates were subjected to SDS PAGE followed by western blot with 67183-1-Ig (DMAP1 antibody) at dilution of 1:10000 incubated at room temperature for 1.5 hours. This data was developed using the same antibody clone with 67183-1-PBS in a different storage buffer formulation.



Immunofluorescent analysis of (4% PFA) fixed HEK-293 cells using DMAP1 antibody (67183-1-Ig, Clone: 1A4E8) at dilution of 1:800 and CoraLite®488-Conjugated AffiniPure Goat Anti-Mouse IgG(H+L), CL594-Phalloidin (red). This data was developed using the same antibody clone with 67183-1-PBS in a different storage buffer formulation.