

For Research Use Only

YES1 Monoclonal antibody

Catalog Number: 67196-1-Ig **Featured Product**



Basic Information

Catalog Number: 67196-1-Ig	GenBank Accession Number: BC048960	Purification Method: Protein A purification
Size: 2700 µg/ml	GeneID (NCBI): 7525	CloneNo.: 1A12E7
Source: Mouse	UNIPROT ID: P07947	Recommended Dilutions: WB 1:1000-1:4000 IHC 1:50-1:500
Isotype: IgG2a	Full Name: v-yes-1 Yamaguchi sarcoma viral oncogene homolog 1	
Immunogen Catalog Number: AG5016	Calculated MW: 61 kDa	
	Observed MW: 62 kDa	

Applications

Tested Applications:

IHC, WB, ELISA

Species Specificity:

Human, rat

Note-IHC: suggested antigen retrieval with TE buffer pH 9.0; (*) Alternatively, antigen retrieval may be performed with citrate buffer pH 6.0

Positive Controls:

WB : A549 cells, HepG2 cells, HeLa cells, LNCaP cells, A431 cells, HSC-T6 cells, PC-12 cells

IHC : human kidney tissue,

Background Information

YES1, also named as p61-Yes and YES, belongs to the protein kinase superfamily, Tyr protein kinase family and SRC subfamily. It promotes infectivity of Neisseria gonorrhoeae in epithelial cells by phosphorylating MCP/CD46. YES1 catalyzes the reaction: ATP + a [protein]-L-tyrosine = ADP + a [protein]-L-tyrosine phosphate.

Storage

Storage:

Store at -20°C.

Storage Buffer:

PBS with 0.1% sodium azide and 50% glycerol pH 7.3.

Aliquoting is unnecessary for -20°C storage

For technical support and original validation data for this product please contact:

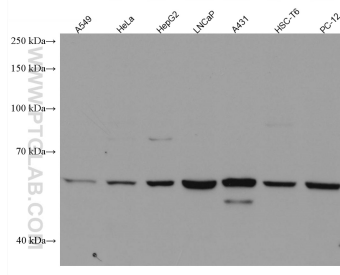
T: 4006900926

E: Proteintech-CN@ptglab.com

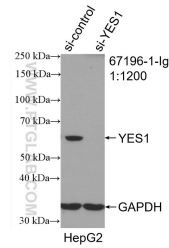
W: ptgcn.com

This product is exclusively available under Proteintech Group brand and is not available to purchase from any other manufacturer.

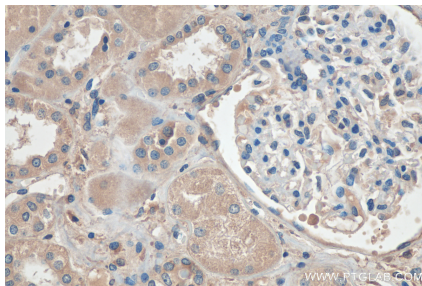
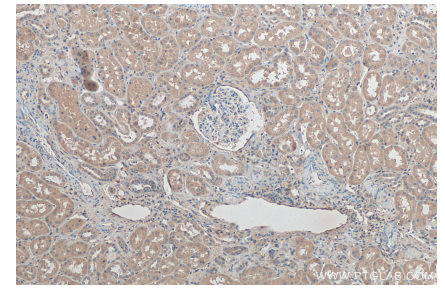
Selected Validation Data



Various lysates were subjected to SDS PAGE followed by western blot with 67196-1-Ig (YES1 antibody) at dilution of 1:2000 incubated at room temperature for 1.5 hours.



WB result of YES1 antibody (67196-1-Ig; 1:1200; incubated at room temperature for 1.5 hours) with sh-Control and sh-YES1 transfected HepG2 cells.



Immunohistochemical analysis of paraffin-embedded human kidney tissue slide using 67196-1-Ig (YES1 antibody) at dilution of 1:200 (under 40x lens). Heat mediated antigen retrieval with Tris-EDTA buffer (pH 9.0).