

For Research Use Only

YES1 Monoclonal antibody, PBS Only



Catalog Number: 67196-1-PBS

Featured Product

Basic Information

Catalog Number:

67196-1-PBS

Size:

1 mg/ml

Source:

Mouse

Isotype:

IgG2a

Immunogen Catalog Number:

AG5016

GenBank Accession Number:

BC048960

GeneID (NCBI):

7525

UNIPROT ID:

P07947

Full Name:

v-yes-1 Yamaguchi sarcoma viral oncogene homolog 1

Calculated MW:

61 kDa

Observed MW:

62 kDa

Purification Method:

Protein A purification

CloneNo.:

1A12E7

Applications

Tested Applications:

WB, Indirect ELISA, IHC

Species Specificity:

Human, rat

Background Information

YES1, also named as p61-Yes and YES, belongs to the protein kinase superfamily, Tyr protein kinase family and SRC subfamily. It promotes infectivity of *Neisseria gonorrhoeae* in epithelial cells by phosphorylating MCP/CD46. YES1 catalyzes the reaction: $ATP + a \text{ [protein]-L-tyrosine} = ADP + a \text{ [protein]-L-tyrosine phosphate}$.

Storage

Storage:

Store at -80°C.

The product is shipped with ice packs. Upon receipt, store it immediately at -80°C

Storage Buffer:

PBS Only

For technical support and original validation data for this product please contact:

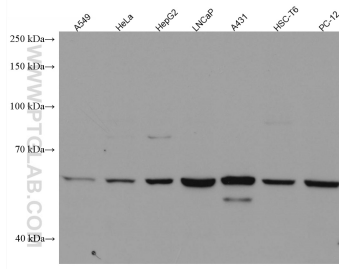
T: 4006900926

E: Proteintech-CN@ptglab.com

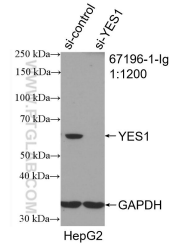
W: ptgcn.com

This product is exclusively available under Proteintech Group brand and is not available to purchase from any other manufacturer.

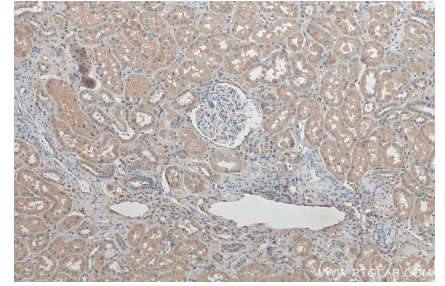
Selected Validation Data



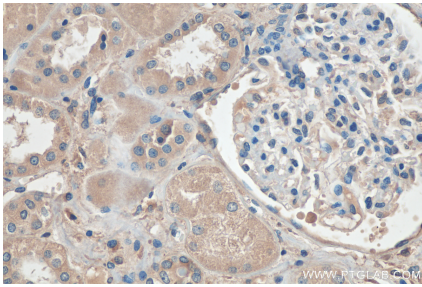
Various lysates were subjected to SDS PAGE followed by western blot with 67196-1-Ig (YES1 antibody) at dilution of 1:2000 incubated at room temperature for 1.5 hours. This data was developed using the same antibody clone with 67196-1-PBS in a different storage buffer formulation.



WB result of YES1 antibody (67196-1-Ig; 1:1200; incubated at room temperature for 1.5 hours) with sh-Control and sh-YES1 transfected HepG2 cells. This data was developed using the same antibody clone with 67196-1-PBS in a different storage buffer formulation.



Immunohistochemical analysis of paraffin-embedded human kidney tissue slide using 67196-1-Ig (YES1 antibody) at dilution of 1:200 (under 10x lens). Heat mediated antigen retrieval with Tris-EDTA buffer (pH 9.0). This data was developed using the same antibody clone with 67196-1-PBS in a different storage buffer formulation.



Immunohistochemical analysis of paraffin-embedded human kidney tissue slide using 67196-1-Ig (YES1 antibody) at dilution of 1:200 (under 40x lens). Heat mediated antigen retrieval with Tris-EDTA buffer (pH 9.0). This data was developed using the same antibody clone with 67196-1-PBS in a different storage buffer formulation.