

For Research Use Only

UBE1 Monoclonal antibody, PBS Only



Catalog Number: 67198-1-PBS

Basic Information

Catalog Number:

67198-1-PBS

Size:

1 mg/ml

Source:

Mouse

Isotype:

IgG2a

Immunogen Catalog Number:

AG8920

GenBank Accession Number:

BC013041

GeneID (NCBI):

7317

UNIPROT ID:

P22314

Full Name:

ubiquitin-like modifier activating enzyme 1

Calculated MW:

1058 aa, 118 kDa

Observed MW:

114-118 kDa

Purification Method:

Protein A purification

CloneNo.:

1H7E8

Applications

Tested Applications:

WB, Indirect ELISA, IHC, IF

Species Specificity:

Human, mouse, rat

Background Information

Storage

Storage:

Store at -80°C.

The product is shipped with ice packs. Upon receipt, store it immediately at -80°C

Storage Buffer:

PBS Only

For technical support and original validation data for this product please contact:

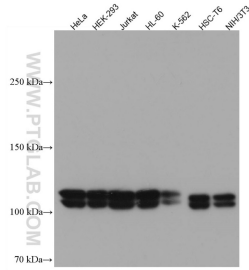
T: 4006900926

E: Proteintech-CN@ptglab.com

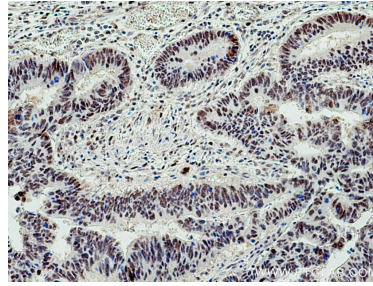
W: ptgcn.com

This product is exclusively available under Proteintech Group brand and is not available to purchase from any other manufacturer.

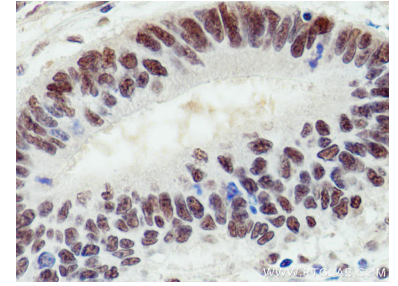
Selected Validation Data



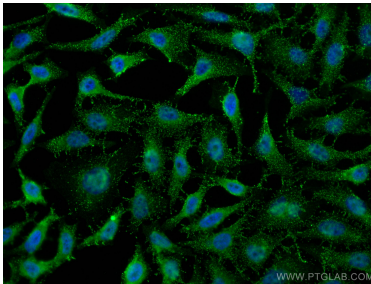
Various lysates were subjected to SDS PAGE followed by western blot with 67198-1-Ig (UBE1 antibody) at dilution of 1:5000 incubated at room temperature for 1.5 hours. This data was developed using the same antibody clone with 67198-1-PBS in a different storage buffer formulation.



Immunohistochemical analysis of paraffin-embedded human colon cancer tissue slide using 67198-1-Ig (UBE1 antibody) at dilution of 1:1000 (under 10x lens). Heat mediated antigen retrieval with Tris-EDTA buffer (pH 9.0). This data was developed using the same antibody clone with 67198-1-PBS in a different storage buffer formulation.



Immunohistochemical analysis of paraffin-embedded human colon cancer tissue slide using 67198-1-Ig (UBE1 antibody) at dilution of 1:1000 (under 40x lens). Heat mediated antigen retrieval with Tris-EDTA buffer (pH 9.0). This data was developed using the same antibody clone with 67198-1-PBS in a different storage buffer formulation.



Immunofluorescent analysis of (4% PFA) fixed HeLa cells using UBE1 antibody (67198-1-Ig, Clone: 1H7E8) at dilution of 1:400 and CoraLite®488-Conjugated AffiniPure Goat Anti-Mouse IgG(H+L). This data was developed using the same antibody clone with 67198-1-PBS in a different storage buffer formulation.