

For Research Use Only

# RPL17 Monoclonal antibody

Catalog Number: 67223-1-Ig **3 Publications**



## Basic Information

<b>Catalog Number:</b> 67223-1-Ig	<b>GenBank Accession Number:</b> BC066323	<b>Purification Method:</b> Protein G purification
<b>Size:</b> 1800 µg/ml	<b>GeneID (NCBI):</b> 6139	<b>CloneNo.:</b> 1C5E6
<b>Source:</b> Mouse	<b>UNIPROT ID:</b> P18621	<b>Recommended Dilutions:</b> WB 1:5000-1:50000 IHC 1:250-1:1000 IF/ICC 1:200-1:800
<b>Isotype:</b> IgG1	<b>Full Name:</b> ribosomal protein L17	
<b>Immunogen Catalog Number:</b> AG5393	<b>Calculated MW:</b> 21 kDa	
	<b>Observed MW:</b> 20-23 kDa	

## Applications

<b>Tested Applications:</b> WB, IHC, IF/ICC, ELISA	<b>Positive Controls:</b> WB : HeLa cells, HEK-293 cells, HepG2 cells, Jurkat cells, HSC-T6 cells, NIH/3T3 cells, 4T1 cells IHC : human pancreas cancer tissue, IF/ICC : HepG2 cells,
<b>Cited Applications:</b> WB, IHC, IF	
<b>Species Specificity:</b> Human, Mouse, Rat	
<b>Cited Species:</b> human, rat	
<b>Note-IHC: suggested antigen retrieval with TE buffer pH 9.0; (*) Alternatively, antigen retrieval may be performed with citrate buffer pH 6.0</b>	

## Background Information

Ribosomes, the organelles that catalyze protein synthesis, consist of a small 40S subunit and a large 60S subunit. Together these subunits are composed of 4 RNA species and approximately 80 structurally distinct proteins. RPL17 gene encodes a ribosomal protein that is a component of the 60S subunit belonging to the L22P family of ribosomal proteins. It is located in the cytoplasm. This gene has been referred to as rpl23 because the encoded protein shares amino acid identity with ribosomal protein L23 from Halobacterium marismortui; however, its official symbol is RPL17.

## Notable Publications

Author	Pubmed ID	Journal	Application
Zhenyuan Wei	35615641	J Orthop Translat	WB,IHC
Jie Liu	38899899	J Virol	WB,IF
Magdalena Wolczyk	37123244	iScience	WB

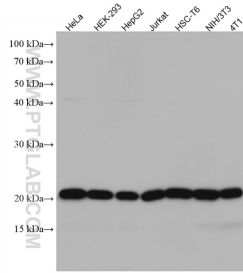
## Storage

**Storage:**  
Store at -20°C. Stable for one year after shipment.  
**Storage Buffer:**  
PBS with 0.02% sodium azide and 50% glycerol pH 7.3.  
Aliquoting is unnecessary for -20°C storage

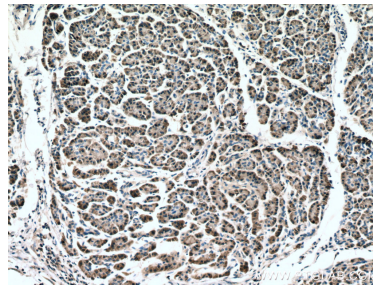
For technical support and original validation data for this product please contact:  
T: 4006900926 E: Proteintech-CN@ptglab.com W: ptgcn.com

This product is exclusively available under Proteintech Group brand and is not available to purchase from any other manufacturer.

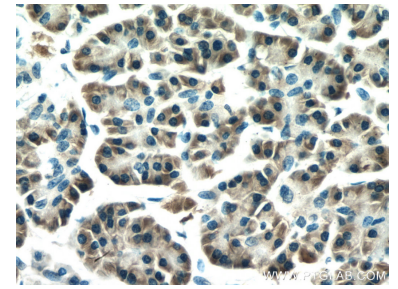
## Selected Validation Data



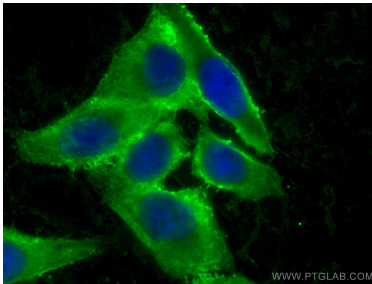
Various lysates were subjected to SDS PAGE followed by western blot with 67223-1-Ig (RPL17 antibody) at dilution of 1:10000 incubated at room temperature for 1.5 hours.



Immunohistochemical analysis of paraffin-embedded human pancreas cancer tissue slide using 67223-1-Ig (RPL17 antibody) at dilution of 1:500 (under 10x lens). Heat mediated antigen retrieval with Tris-EDTA buffer (pH 9.0).



Immunohistochemical analysis of paraffin-embedded human pancreas cancer tissue slide using 67223-1-Ig (RPL17 antibody) at dilution of 1:500 (under 40x lens). Heat mediated antigen retrieval with Tris-EDTA buffer (pH 9.0).



Immunofluorescent analysis of (-20°C Ethanol) fixed HepG2 cells using RPL17 antibody (67223-1-Ig, Clone: 1C5E6) at dilution of 1:400 and CoraLite®488-Conjugated Goat Anti-Mouse IgG(H+L) (SA00013-1).