

For Research Use Only

RPL17 Monoclonal antibody, PBS Only



Catalog Number: 67223-1-PBS

Basic Information

Catalog Number: 67223-1-PBS	GenBank Accession Number: BC066323	Purification Method: Protein G purification
Size: 1 mg/ml	GeneID (NCBI): 6139	CloneNo.: 1C5E6
Source: Mouse	UNIPROT ID: P18621	
Isotype: IgG1	Full Name: ribosomal protein L17	
Immunogen Catalog Number: AG5393	Calculated MW: 21 kDa	
	Observed MW: 20-23 kDa	

Applications

Tested Applications:
WB, Indirect ELISA, IHC, IF

Species Specificity:
Human, Mouse, Rat

Background Information

Ribosomes, the organelles that catalyze protein synthesis, consist of a small 40S subunit and a large 60S subunit. Together these subunits are composed of 4 RNA species and approximately 80 structurally distinct proteins. RPL17 gene encodes a ribosomal protein that is a component of the 60S subunit belonging to the L22P family of ribosomal proteins. It is located in the cytoplasm. This gene has been referred to as rpl23 because the encoded protein shares amino acid identity with ribosomal protein L23 from *Halobacterium marismortui*; however, its official symbol is RPL17.

Storage

Storage:
Store at -80°C.
The product is shipped with ice packs. Upon receipt, store it immediately at -80°C

Storage Buffer:
PBS Only

For technical support and original validation data for this product please contact:

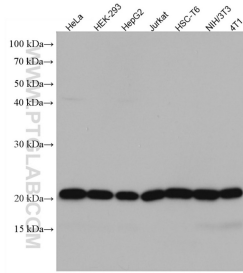
T: 4006900926

E: Proteintech-CN@ptglab.com

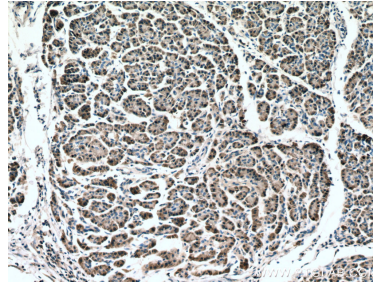
W: ptgcn.com

This product is exclusively available under Proteintech Group brand and is not available to purchase from any other manufacturer.

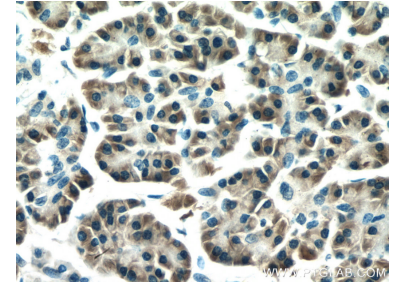
Selected Validation Data



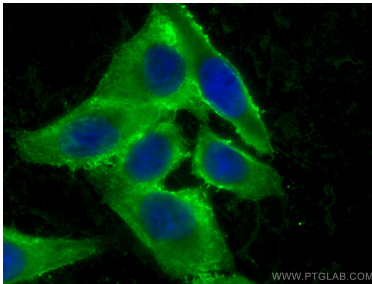
Various lysates were subjected to SDS PAGE followed by western blot with 67223-1-Ig (RPL17 antibody) at dilution of 1:10000 incubated at room temperature for 1.5 hours. This data was developed using the same antibody clone with 67223-1-PBS in a different storage buffer formulation.



Immunohistochemical analysis of paraffin-embedded human pancreas cancer tissue slide using 67223-1-Ig (RPL17 antibody) at dilution of 1:500 (under 10x lens). Heat mediated antigen retrieval with Tris-EDTA buffer (pH 9.0). This data was developed using the same antibody clone with 67223-1-PBS in a different storage buffer formulation.



Immunohistochemical analysis of paraffin-embedded human pancreas cancer tissue slide using 67223-1-Ig (RPL17 antibody) at dilution of 1:500 (under 40x lens). Heat mediated antigen retrieval with Tris-EDTA buffer (pH 9.0). This data was developed using the same antibody clone with 67223-1-PBS in a different storage buffer formulation.



Immunofluorescent analysis of (-20°C Ethanol) fixed HepG2 cells using RPL17 antibody (67223-1-Ig, Clone: 1C5E6) at dilution of 1:400 and CoraLite®488-Conjugated AffiniPure Goat Anti-Mouse IgG(H+L) (SA00013-1). This data was developed using the same antibody clone with 67223-1-PBS in a different storage buffer formulation.