

For Research Use Only

# CD300A Monoclonal antibody, PBS Only (Capture)

Catalog Number: 67242-2-PBS



## Basic Information

Catalog Number: 67242-2-PBS	GenBank Accession Number: BC032352	Purification Method: Protein G Magarose purification
Size: 1 mg/ml	GeneID (NCBI): 11314	CloneNo.: 2D3B3
Source: Mouse	UNIPROT ID: Q9UGN4	
Isotype: IgG1	Full Name: CD300a molecule	
Immunogen Catalog Number: AG5776	Calculated MW: 299 aa, 33 kDa	

## Applications

**Tested Applications:**  
Cytometric bead array, Indirect ELISA

**Species Specificity:**  
human

## Background Information

### Storage

**Storage:**  
Store at -80°C.  
**The product is shipped with ice packs. Upon receipt, store it immediately at -80°C**

**Storage Buffer:**  
PBS Only

For technical support and original validation data for this product please contact:

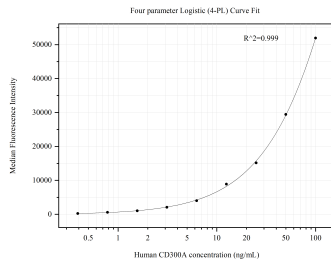
T: 4006900926

E: [Proteintech-CN@ptglab.com](mailto:Proteintech-CN@ptglab.com)

W: [ptgcn.com](http://ptgcn.com)

**This product is exclusively available under Proteintech Group brand and is not available to purchase from any other manufacturer.**

## Selected Validation Data



Cytometric bead array standard curve of MP50466-1, CD300A Monoclonal Matched Antibody Pair, PBS Only. Capture antibody: 67242-2-PBS. Detection antibody: 67242-1-PBS. Standard: Ag5776. Range: 0.391-100 ng/mL.