

For Research Use Only

# C20orf30 Monoclonal antibody, PBS Only (Capture)

Catalog Number: 67247-2-PBS



## Basic Information

Catalog Number:

67247-2-PBS

Size:

1 mg/ml

Source:

Mouse

Isotype:

IgG1

Immunogen Catalog Number:

AG15080

GenBank Accession Number:

BC011990

GeneID (NCBI):

29058

UNIPROT ID:

Q96A57

Full Name:

chromosome 20 open reading frame

30

Calculated MW:

183 aa, 20 kDa

Purification Method:

Protein G Magarose purification

CloneNo.:

4E7A7

## Applications

Tested Applications:

Cytometric bead array, Indirect ELISA

Species Specificity:

human

## Background Information

### Storage

Storage:

Store at -80°C.

The product is shipped with ice packs. Upon receipt, store it immediately at -80°C

Storage Buffer:

PBS Only

For technical support and original validation data for this product please contact:

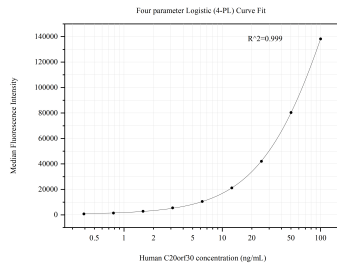
T: 4006900926

E: [Proteintech-CN@ptglab.com](mailto:Proteintech-CN@ptglab.com)

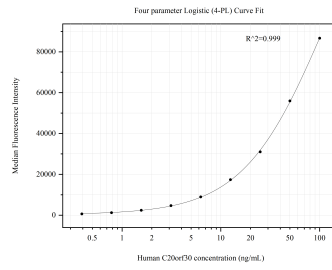
W: [ptgcn.com](http://ptgcn.com)

This product is exclusively available under Proteintech Group brand and is not available to purchase from any other manufacturer.

## Selected Validation Data



Cytometric bead array standard curve of MP50730-1, C20orf30 Monoclonal Matched Antibody Pair, PBS Only. Capture antibody: 67247-2-PBS. Detection antibody: 67247-3-PBS. Standard: Ag15080. Range: 0.391-100 ng/mL.



Cytometric bead array standard curve of MP50730-2, C20orf30 Monoclonal Matched Antibody Pair, PBS Only. Capture antibody: 67247-2-PBS. Detection antibody: 67247-4-PBS. Standard: Ag15080. Range: 0.391-100 ng/mL.