

For Research Use Only

C20orf30 Monoclonal antibody, PBS Only (Capture/Detector)

Catalog Number: 67247-4-PBS



Basic Information

Catalog Number:

67247-4-PBS

Size:

1 mg/ml

Source:

Mouse

Isotype:

IgG2b

Immunogen Catalog Number:

AG15080

GenBank Accession Number:

BC011990

GeneID (NCBI):

29058

UNIPROT ID:

Q96A57

Full Name:

chromosome 20 open reading frame

30

Calculated MW:

183 aa, 20 kDa

Purification Method:

Protein A Magarose purification

CloneNo.:

3A6A6

Applications

Tested Applications:

Cytometric bead array, Indirect ELISA

Species Specificity:

human

Background Information

Storage

Storage:

Store at -80°C.

The product is shipped with ice packs. Upon receipt, store it immediately at -80°C

Storage Buffer:

PBS Only

For technical support and original validation data for this product please contact:

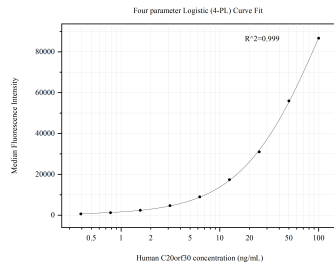
T: 4006900926

E: Proteintech-CN@ptglab.com

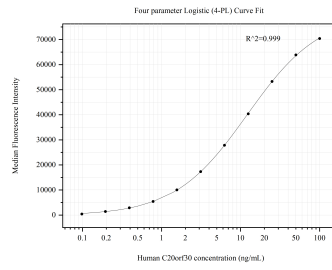
W: ptgcn.com

This product is exclusively available under Proteintech Group brand and is not available to purchase from any other manufacturer.

Selected Validation Data



Cytometric bead array standard curve of MP50730-2, C20orf30 Monoclonal Matched Antibody Pair, PBS Only. Capture antibody: 67247-2-PBS. Detection antibody: 67247-4-PBS. Standard: Ag15080. Range: 0.391-100 ng/mL.



Cytometric bead array standard curve of MP50730-3, C20orf30 Monoclonal Matched Antibody Pair, PBS Only. Capture antibody: 67247-4-PBS. Detection antibody: 67247-3-PBS. Standard: Ag15080. Range: 0.098-100 ng/mL.