

For Research Use Only

BCR Monoclonal antibody, PBS Only

Catalog Number: 67260-1-PBS



Basic Information

Catalog Number: 67260-1-PBS	GenBank Accession Number: BC066122	Purification Method: Protein A purification
Size: 1 mg/ml	GeneID (NCBI): 613	CloneNo.: 2C2E3
Source: Mouse	UNIPROT ID: P11274	
Isotype: IgG2b	Full Name: breakpoint cluster region	
Immunogen Catalog Number: AG28953	Calculated MW: 143 kDa	
	Observed MW: 150-160 kDa	

Applications

Tested Applications:
WB, Indirect ELISA, FC

Species Specificity:
Human, rat

Background Information

The Bcr gene, mapping on chromosome 22, was originally identified by its presence in the chimeric Bcr-Abl oncogene. The Bcr gene encodes for the break point cluster region protein (Bcr). Although the BCR-ABL fusion protein has been extensively studied, the function of the normal BCR gene product is not clear. The protein has serine/threonine kinase activity and is a GTPase-activating protein for RAC1 and CDC42. A chromosomal aberration involving BCR has been found in patients with chronic myeloid leukemia.

Storage

Storage:
Store at -80°C.

Storage Buffer:
PBS Only

For technical support and original validation data for this product please contact:

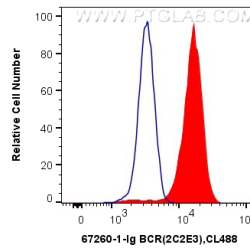
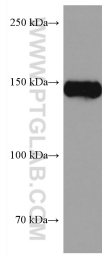
T: 4006900926

E: Proteintech-CN@ptglab.com

W: ptgcn.com

This product is exclusively available under Proteintech Group brand and is not available to purchase from any other manufacturer.

Selected Validation Data



Jurkat cells were subjected to SDS PAGE followed by western blot with 67260-1-Ig (BCR antibody) at dilution of 1:5000 incubated at room temperature for 1.5 hours. This data was developed using the same antibody clone with 67260-1-PBS in a different storage buffer formulation.

1×10^6 K-562 cells were intracellularly stained with 0.4 ug Anti-Human BCR (67260-1-Ig, Clone:2C2E3) and CoraLite®488-Conjugated AffiniPure Goat Anti-Mouse IgG(H+L) at dilution 1:1000 (red), or 0.4 ug Mouse IgG2b Isotype Control (66360-3-Ig, Clone: K11B8C4B5) (blue). Cells were fixed with 4% PFA and permeabilized with Flow Cytometry Perm Buffer (PF00011-C). This data was developed using the same antibody clone with 67260-1-PBS in a different storage buffer