

For Research Use Only

# LAMC3-Specific Monoclonal antibody, PBS Only



Catalog Number: 67261-1-PBS

## Basic Information

<b>Catalog Number:</b> 67261-1-PBS	<b>GenBank Accession Number:</b> NM_006059	<b>Purification Method:</b> Protein A purification
<b>Size:</b> 1 mg/ml	<b>GeneID (NCBI):</b> 10319	<b>CloneNo.:</b> 4B8C5
<b>Source:</b> Mouse	<b>UNIPROT ID:</b> Q9Y6N6	
<b>Isotype:</b> IgG2a	<b>Full Name:</b> laminin, gamma 3	
<b>Immunogen Catalog Number:</b> AG19568	<b>Calculated MW:</b> 1575 aa, 171 kDa	
	<b>Observed MW:</b> 180-200 kDa	

## Applications

**Tested Applications:**  
WB, Indirect ELISA, IF

**Species Specificity:**  
Human, Mouse

## Background Information

### Storage

**Storage:**  
Store at -80°C.  
**The product is shipped with ice packs. Upon receipt, store it immediately at -80°C**

**Storage Buffer:**  
PBS Only

For technical support and original validation data for this product please contact:

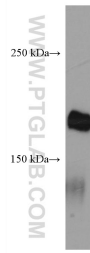
T: 4006900926

E: [Proteintech-CN@ptglab.com](mailto:Proteintech-CN@ptglab.com)

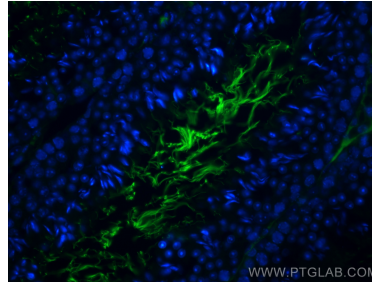
W: [ptgcn.com](http://ptgcn.com)

**This product is exclusively available under Proteintech Group brand and is not available to purchase from any other manufacturer.**

## Selected Validation Data



human testis tissue were subjected to SDS PAGE followed by western blot with 67261-1-Ig (LAMC3-Specific antibody) at dilution of 1:1500 incubated at room temperature for 1.5 hours. This data was developed using the same antibody clone with 67261-1-PBS in a different storage buffer formulation.



Immunofluorescent analysis of (4% PFA) fixed mouse testis tissue using LAMC3-Specific antibody (67261-1-Ig, Clone: 4B8C5) at dilution of 1:400 and CoraLite®488-Conjugated AffiniPure Goat Anti-Mouse IgG(H+L). This data was developed using the same antibody clone with 67261-1-PBS in a different storage buffer formulation.