

For Research Use Only

# CYP2E1-Specific Monoclonal antibody, PBS Only

Catalog Number: 67263-1-PBS



## Basic Information

Catalog Number:

67263-1-PBS

Size:

1mg/ml

Source:

Mouse

Isotype:

IgG2b

GenBank Accession Number:

NM\_000773

GeneID (NCBI):

1571

UNIPROT ID:

P05181

Full Name:

cytochrome P450, family 2, subfamily  
E, polypeptide 1

Calculated MW:

57 kDa

Observed MW:

50-57 kDa

Purification Method:

Protein A purification

CloneNo.:

1F12G7

## Applications

Tested Applications:

WB, IHC, IF-P, Indirect ELISA

Species Specificity:

mouse, rat, pig

## Background Information

CYP2E1, also named as CYP11E1, 4-nitrophenol 2-hydroxylase, P450-J and CYP2E, belongs to the cytochrome P450 family. CYP2E1 metabolizes several precarcinogens, drugs, and solvents to reactive metabolites. It inactivates a number of drugs and xenobiotics and also bioactivates many xenobiotic substrates to their hepatotoxic or carcinogenic forms. CYP2E1 catalyze the reaction: 4-nitrophenol + NADPH + O<sub>2</sub> = 4-nitrocatechol + NADP<sup>+</sup> + H<sub>2</sub>O. CYP2E1 can be detected as 50-57 kDa (full-length) and ~40 kDa (N-terminal signal peptide cleaved) (PMID: 21130154). The antibody is specific to CYP2E1.

## Storage

Storage:

Store at -80°C.

The product is shipped with ice packs. Upon receipt, store it immediately at -80°C

Storage Buffer:

PBS Only

For technical support and original validation data for this product please contact:

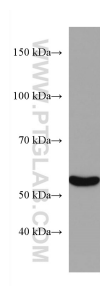
T: 4006900926

E: [Proteintech-CN@ptglab.com](mailto:Proteintech-CN@ptglab.com)

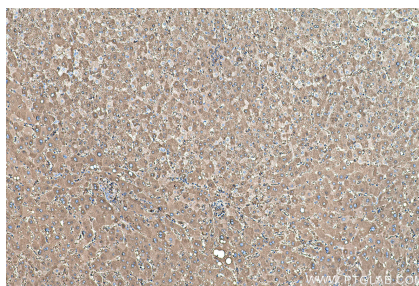
W: [ptgcn.com](http://ptgcn.com)

This product is exclusively available under Proteintech Group brand and is not available to purchase from any other manufacturer.

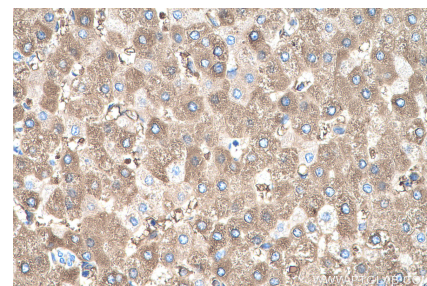
## Selected Validation Data



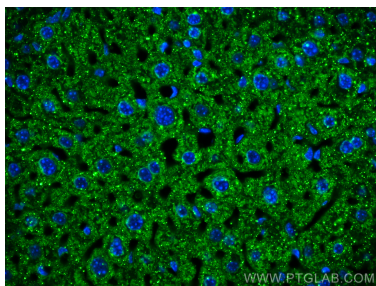
pig liver tissue were subjected to SDS PAGE followed by western blot with 67263-1-Ig (CYP2E1-Specific antibody) at dilution of 1:3000 incubated at room temperature for 1.5 hours. This data was developed using the same antibody clone with 67263-1-PBS in a different storage buffer formulation.



Immunohistochemical analysis of paraffin-embedded human liver tissue slide using 67263-1-Ig (CYP2E1-Specific antibody) at dilution of 1:1000 (under 10x lens). Heat mediated antigen retrieval with Tris-EDTA buffer (pH 9.0). This data was developed using the same antibody clone with 67263-1-PBS in a different storage buffer formulation.



Immunohistochemical analysis of paraffin-embedded human liver tissue slide using 67263-1-Ig (CYP2E1-Specific antibody) at dilution of 1:1000 (under 40x lens). Heat mediated antigen retrieval with Tris-EDTA buffer (pH 9.0). This data was developed using the same antibody clone with 67263-1-PBS in a different storage buffer formulation.



Immunofluorescent analysis of (4% PFA) fixed paraffin-embedded mouse liver tissue using CYP2E1-Specific antibody (67263-1-Ig, Clone: 1F12G7) at dilution of 1:800 and Coralite®488-Conjugated Goat Anti-Mouse IgG(H+L) (SA00013-1). Heat mediated antigen retrieval with Tris-EDTA buffer (pH 9.0). This data was developed using the same antibody clone with 67263-1-PBS in a different storage buffer formulation.