

For Research Use Only

# PSG1 Monoclonal antibody, PBS Only (Capture)



Catalog Number: 67269-1-PBS

## Basic Information

<b>Catalog Number:</b> 67269-1-PBS	<b>GenBank Accession Number:</b> BC022338	<b>Purification Method:</b> Protein G purification
<b>Size:</b> 1mg/ml	<b>GeneID (NCBI):</b> 5669	<b>CloneNo.:</b> 1C6C4
<b>Source:</b> Mouse	<b>UNIPROT ID:</b> P11464	
<b>Isotype:</b> IgG1	<b>Full Name:</b> pregnancy specific beta-1- glycoprotein 1	
<b>Immunogen Catalog Number:</b> AG28604	<b>Calculated MW:</b> 426 aa, 48 kDa	
	<b>Observed MW:</b> 54-70 kDa	

## Applications

**Tested Applications:**  
WB, IHC, Cytometric bead array, Indirect ELISA

**Species Specificity:**  
human

## Background Information

### Storage

**Storage:**  
Store at -80°C.  
**The product is shipped with ice packs. Upon receipt, store it immediately at -80°C**

**Storage Buffer:**  
PBS Only

For technical support and original validation data for this product please contact:

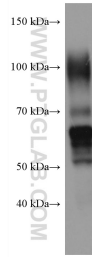
T: 4006900926

E: [Proteintech-CN@ptglab.com](mailto:Proteintech-CN@ptglab.com)

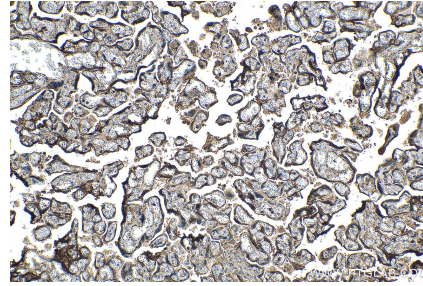
W: [ptgcn.com](http://ptgcn.com)

**This product is exclusively available under Proteintech Group brand and is not available to purchase from any other manufacturer.**

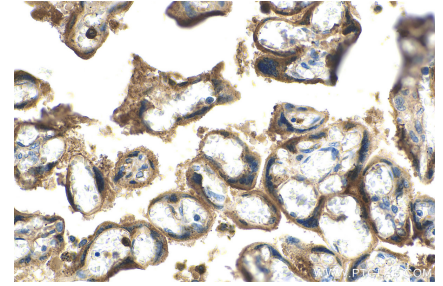
## Selected Validation Data



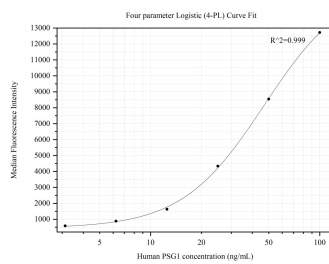
human placenta tissue were subjected to SDS PAGE followed by western blot with 67269-1-Ig (PSG1 antibody) at dilution of 1:50000 incubated at room temperature for 1.5 hours. This data was developed using the same antibody clone with 67269-1-PBS in a different storage buffer formulation.



Immunohistochemical analysis of paraffin-embedded human placenta tissue slide using 67269-1-Ig (PSG1 antibody) at dilution of 1:5000 (under 10x lens). Heat mediated antigen retrieval with Tris-EDTA buffer (pH 9.0). This data was developed using the same antibody clone with 67269-1-PBS in a different storage buffer formulation.



Immunohistochemical analysis of paraffin-embedded human placenta tissue slide using 67269-1-Ig (PSG1 antibody) at dilution of 1:5000 (under 40x lens). Heat mediated antigen retrieval with Tris-EDTA buffer (pH 9.0). This data was developed using the same antibody clone with 67269-1-PBS in a different storage buffer formulation.



Cytometric bead array standard curve of MP50302-2, PSG1 Monoclonal Matched Antibody Pair, PBS Only. Capture antibody: 67269-1-PBS. Detection antibody: 67269-4-PBS. Standard: Ag28604. Range: 3.125-100 ng/mL.