

For Research Use Only

# VANGL2 Monoclonal antibody, PBS Only

Catalog Number: 67273-1-PBS

Featured Product



## Basic Information

<b>Catalog Number:</b> 67273-1-PBS	<b>GenBank Accession Number:</b> BC103920	<b>Purification Method:</b> Protein A purification
<b>Size:</b> 1 mg/ml	<b>GeneID (NCBI):</b> 57216	<b>CloneNo.:</b> 1B2C1
<b>Source:</b> Mouse	<b>UNIPROT ID:</b> Q9ULK5	
<b>Isotype:</b> IgG3	<b>Full Name:</b> vang-like 2 (van gogh, Drosophila)	
<b>Immunogen Catalog Number:</b> AG16980	<b>Calculated MW:</b> 521 aa, 60 kDa	
	<b>Observed MW:</b> 60 kDa	

## Applications

**Tested Applications:**  
WB, Indirect ELISA

**Species Specificity:**  
human

## Background Information

Vangl2 is a key component of the planar cell polarity (PCP) pathway. Vangl2 is tightly associated with the postsynaptic density (PSD) fraction and forms a protein complex with PSD-95 and NMDA receptors. Vangl2 directly binds to the third PDZ domain of PSD-95 via its C-terminal TSV motif. Vangl2 directly binds to N-cadherin.

## Storage

**Storage:**  
Store at -80°C.  
**The product is shipped with ice packs. Upon receipt, store it immediately at -80°C**

**Storage Buffer:**  
PBS Only

For technical support and original validation data for this product please contact:

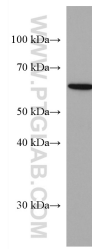
T: 4006900926

E: [Proteintech-CN@ptglab.com](mailto:Proteintech-CN@ptglab.com)

W: [ptgcn.com](http://ptgcn.com)

**This product is exclusively available under Proteintech Group brand and is not available to purchase from any other manufacturer.**

## Selected Validation Data



MCF-7 cells were subjected to SDS PAGE followed by western blot with 67273-1-Ig (VANGL2 antibody) at dilution of 1:3000 incubated at room temperature for 1.5 hours. This data was developed using the same antibody clone with 67273-1-PBS in a different storage buffer formulation.