

For Research Use Only

WWP2 Monoclonal antibody, PBS Only



Catalog Number: 67274-1-PBS

Basic Information

Catalog Number:

67274-1-PBS

Size:

1 mg/ml

Source:

Mouse

Isotype:

IgG1

Immunogen Catalog Number:

AG2835

GenBank Accession Number:

BC013645

GeneID (NCBI):

11060

UNIPROT ID:

O00308

Full Name:

WW domain containing E3 ubiquitin protein ligase 2

Calculated MW:

870 aa, 99 kDa

Observed MW:

100-115 kDa

Purification Method:

Protein G purification

CloneNo.:

2C9B4

Applications

Tested Applications:

WB, Indirect ELISA, IHC

Species Specificity:

Human, Rat

Background Information

WWP2 (WW domain-containing protein 2) is also named as AIP2 and belongs to the NEDD4-like protein family. It functions as an E3 ubiquitin ligase for PTEN that plays a vital role in tumour-cell survival and is also involved in regulating transcription, embryonic stem-cell fate, cellular transport and T-cell activation processes (PMID:21532586). WWP2, which specifically interacted with ES cell-specific transcription factor Oct-4 and promoted its ubiquitination both in vitro and in vivo, is a ubiquitously expressed protein and exists in both cytoplasmic and nuclear compartments in ES cells (PMID:15047715).

Storage

Storage:

Store at -80°C.

The product is shipped with ice packs. Upon receipt, store it immediately at -80°C

Storage Buffer:

PBS Only

For technical support and original validation data for this product please contact:

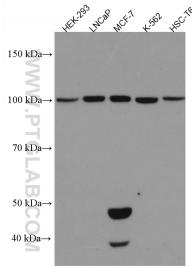
T: 4006900926

E: Proteintech-CN@ptglab.com

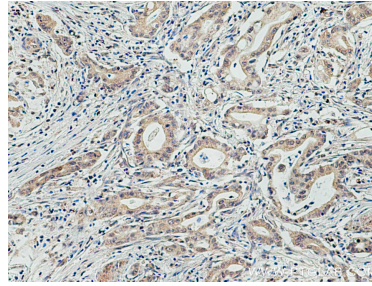
W: ptgcn.com

This product is exclusively available under Proteintech Group brand and is not available to purchase from any other manufacturer.

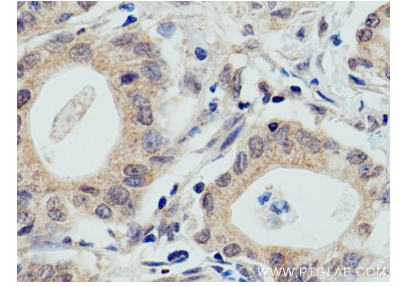
Selected Validation Data



Various lysates were subjected to SDS PAGE followed by western blot with 67274-1-Ig (WWP2 antibody) at dilution of 1:1000 incubated at room temperature for 1.5 hours. This data was developed using the same antibody clone with 67274-1-PBS in a different storage buffer formulation.



Immunohistochemical analysis of paraffin-embedded human pancreas cancer tissue slide using 67274-1-Ig (WWP2 antibody) at dilution of 1:200 (under 10x lens). Heat mediated antigen retrieval with Tris-EDTA buffer (pH 9.0). This data was developed using the same antibody clone with 67274-1-PBS in a different storage buffer formulation.



Immunohistochemical analysis of paraffin-embedded human pancreas cancer tissue slide using 67274-1-Ig (WWP2 antibody) at dilution of 1:200 (under 40x lens). Heat mediated antigen retrieval with Tris-EDTA buffer (pH 9.0). This data was developed using the same antibody clone with 67274-1-PBS in a different storage buffer formulation.