

For Research Use Only

Ins1 Monoclonal antibody

Catalog Number: 67284-1-Ig



Basic Information

Catalog Number: 67284-1-Ig	GenBank Accession Number: NM_019129.3	Purification Method: Protein A purification
Size: 1500 µg/ml	GeneID (NCBI): 24505	CloneNo.: 3A11C1
Source: Mouse	UNIPROT ID: P01322	Recommended Dilutions: IHC 1:5000-1:10000 IF 1:50-1:500
Isotype: IgG2a	Full Name: insulin 1	
Immunogen Catalog Number: AG28809	Calculated MW: 12 kDa	

Applications

Tested Applications:
IF-P, IHC, ELISA

Species Specificity:
Rat, mouse

Note-IHC: suggested antigen retrieval with **TE buffer pH 9.0; (*) Alternatively, antigen retrieval may be performed with citrate buffer pH 6.0**

Positive Controls:

IHC: rat pancreas tissue, mouse pancreas tissue
IF: rat pancreas tissue,

Background Information

Storage

Storage:
Store at -20°C.

Storage Buffer:
PBS with 0.02% sodium azide and 50% glycerol pH 7.3.

Aliquoting is unnecessary for -20°C storage

For technical support and original validation data for this product please contact:

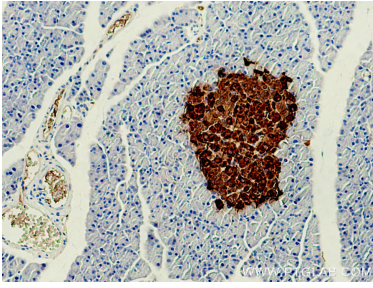
T: 4006900926

E: Proteintech-CN@ptglab.com

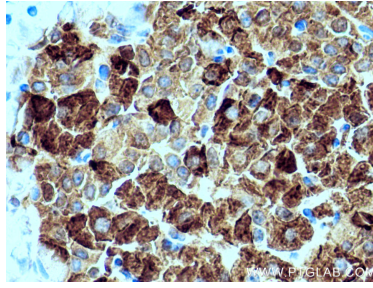
W: ptgcn.com

This product is exclusively available under Proteintech Group brand and is not available to purchase from any other manufacturer.

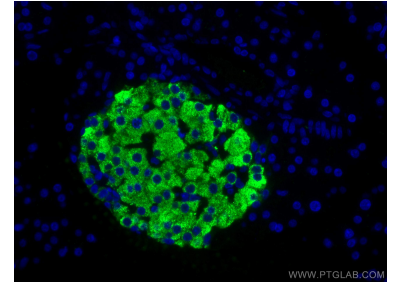
Selected Validation Data



Immunohistochemical analysis of paraffin-embedded rat pancreas tissue slide using 67284-1-Ig (Insulin1 antibody) at dilution of 1:10000 (under 10x lens). Heat mediated antigen retrieval with Tris-EDTA buffer (pH 9.0).



Immunohistochemical analysis of paraffin-embedded rat pancreas tissue slide using 67284-1-Ig (Insulin1 antibody) at dilution of 1:10000 (under 40x lens). Heat mediated antigen retrieval with Tris-EDTA buffer (pH 9.0).



Immunofluorescent analysis of (4% PFA) fixed rat pancreas tissue using Ins1 antibody (67284-1-Ig, Clone: 3A11C1) at dilution of 1:200 and CoraLite®488-Conjugated AffiniPure Goat Anti-Mouse IgG(H+L).