

For Research Use Only

WFS1 Monoclonal antibody, PBS Only



Catalog Number: 67291-1-PBS

Basic Information

Catalog Number: 67291-1-PBS	GenBank Accession Number: BC030130	Purification Method: Protein G purification
Size: 1mg/ml	GeneID (NCBI): 7466	CloneNo.: 4C2B5
Source: Mouse	UNIPROT ID: O76024	
Isotype: IgG1	Full Name: Wolfram syndrome 1 (wolframin)	
Immunogen Catalog Number: AG25735	Calculated MW: 890 aa, 100 kDa	
	Observed MW: 100 kDa	

Applications

Tested Applications:
WB, Indirect ELISA

Species Specificity:
Human, mouse, rat, pig

Background Information

Wolfram syndrome protein (WFS1), also called wolframin, is a transmembrane protein, which is located primarily in the endoplasmic reticulum and its expression is induced in response to ER stress, partially through transcriptional activation. ER localization suggests that WFS1 protein has physiological functions in membrane trafficking, secretion, processing and/or regulation of ER calcium homeostasis. It is ubiquitously expressed with highest levels in brain, pancreas, heart, and insulinoma beta-cell lines. Mutations of the WFS1 gene are responsible for two hereditary diseases, autosomal recessive Wolfram syndrome and autosomal dominant low frequency sensorineural hearing loss.

Storage

Storage:
Store at -80°C.
The product is shipped with ice packs. Upon receipt, store it immediately at -80°C

Storage Buffer:
PBS Only

For technical support and original validation data for this product please contact:

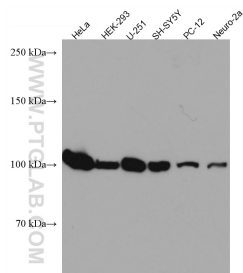
T: 4006900926

E: Proteintech-CN@ptglab.com

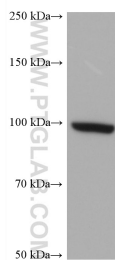
W: ptgcn.com

This product is exclusively available under Proteintech Group brand and is not available to purchase from any other manufacturer.

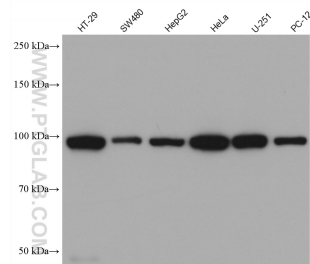
Selected Validation Data



Various lysates were subjected to SDS PAGE followed by western blot with 67291-1-Ig (WFS1 antibody) at dilution of 1:3000 incubated at room temperature for 1.5 hours. This data was developed using the same antibody clone with 67291-1-PBS in a different storage buffer formulation.



A172 cells were subjected to SDS PAGE followed by western blot with 67291-1-Ig (WFS1 antibody) at dilution of 1:5000 incubated at room temperature for 1.5 hours. This data was developed using the same antibody clone with 67291-1-PBS in a different storage buffer formulation.



Various lysates were subjected to SDS PAGE followed by western blot with 67291-1-Ig (WFS1 antibody) at dilution of 1:5000 incubated at room temperature for 1.5 hours. This data was developed using the same antibody clone with 67291-1-PBS in a different storage buffer formulation.